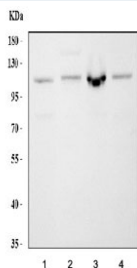


CBL Antibody / Casitas B-lineage lymphoma proto-oncogene (R30898)

Catalog No.	Formulation	Size
R30898	0.5mg/ml if reconstituted with 0.2ml sterile DI water	100 ug

[Bulk quote request](#)

Availability	1-3 business days
Species Reactivity	Human, Mouse, Rat
Format	Antigen affinity purified
Host	Rabbit
Clonality	Polyclonal (rabbit origin)
Isotype	Rabbit IgG
Purity	Antigen affinity
Buffer	Lyophilized from 1X PBS with 2.5% BSA and 0.025% sodium azide/thimerosal
UniProt	P22681
Applications	Western Blot : 0.5-1ug/ml
Limitations	This CBL antibody is available for research use only.



Western blot testing of 1) human MCF7, 2) rat RH35, 3) mouse ANA-1 and 4) mouse NIH 3T3 cell lysate with CBL antibody. Expected molecular weight: 100-120 kDa.

Description

Casitas B lineage lymphoma proto oncogene is also known as CBL, RNF55, and E3 ubiquitin protein ligase. Wei et al.(1990) mapped the CBL gene to chromosome 11q23.3-qter by molecular characterization of the breakpoints in 2 somatic cell hybrids. The encoded protein is one of the enzymes required for targeting substrates for degradation by the proteasome. This protein mediates the transfer of ubiquitin from ubiquitin conjugating enzymes(E2) to specific substrates. This protein also contains an N-terminal phosphotyrosine binding domain that allows it to interact with numerous tyrosine-phosphorylated substrates and target them for proteasome degradation. As such it functions as a negative regulator of many signal transduction pathways. This gene has been found to be mutated or translocated in many cancers including

acute myeloid leukaemia. Mutations in this gene are also the cause of Noonan syndrome-like disorder.

Application Notes

The stated application concentrations are suggested starting amounts. Titration of the CBL antibody may be required due to differences in protocols and secondary/substrate sensitivity.

Immunogen

An amino acid sequence from the C-terminus of human CBL (NLMSQGYSYQDIQKA) was used as the immunogen for this CBL antibody (100% homologous in human, mouse and rat).

Storage

After reconstitution, the CBL antibody can be stored for up to one month at 4°C. For long-term, aliquot and store at -20°C. Avoid repeated freezing and thawing.