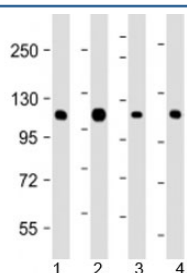


## CBL Antibody [clone 1762CT401.80.60] (F53981)

Catalog No.	Formulation	Size
F53981-0.2ML	In 1X PBS, pH 7.4, with 0.09% sodium azide	0.2 ml
F53981-0.05ML	In 1X PBS, pH 7.4, with 0.09% sodium azide	0.05 ml

[Bulk quote request](#)

<b>Availability</b>	1-3 business days
<b>Species Reactivity</b>	Human
<b>Format</b>	Purified
<b>Clonality</b>	Monoclonal (mouse origin)
<b>Isotype</b>	Mouse IgG2b, kappa
<b>Clone Name</b>	1762CT401.80.60
<b>Purity</b>	Protein G affinity chromatography
<b>UniProt</b>	P22681
<b>Applications</b>	Western Blot : 1:1000-2000
<b>Limitations</b>	This CBL antibody is available for research use only.



Western blot testing of human 1) K562, 2) Jurkat, 3) Raji and 4) SK-BR-3 cell lysate with CBL antibody at 1:2000. Expected molecular weight: 100-120 kDa.

## Description

Adapter protein that functions as a negative regulator of many signaling pathways that are triggered by activation of cell surface receptors. Acts as an E3 ubiquitin-protein ligase, which accepts ubiquitin from specific E2 ubiquitin-conjugating enzymes, and then transfers it to substrates promoting their degradation by the proteasome. Recognizes activated receptor tyrosine kinases, including KIT, FLT1, FGFR1, FGFR2, PDGFRA, PDGFRB, EGFR, CSF1R, EPHA8 and KDR and terminates signaling. Recognizes membrane-bound HCK, SRC and other kinases of the SRC family and mediates their ubiquitination and degradation. Participates in signal transduction in hematopoietic cells. Plays an important role in the regulation of osteoblast differentiation and apoptosis. Essential for osteoclastic bone resorption. The 'Tyr-731'

phosphorylated form induces the activation and recruitment of phosphatidylinositol 3-kinase to the cell membrane in a signaling pathway that is critical for osteoclast function. May be functionally coupled with the E2 ubiquitin-protein ligase UB2D3.

## Application Notes

Titration of the CBL antibody may be required due to differences in protocols and secondary/substrate sensitivity.

## Immunogen

A partial recombinant protein corresponding to amino acids 450-644 from the human protein was used as the immunogen for the CBL antibody.

## Storage

Aliquot the CBL antibody and store frozen at -20oC or colder. Avoid repeated freeze-thaw cycles.