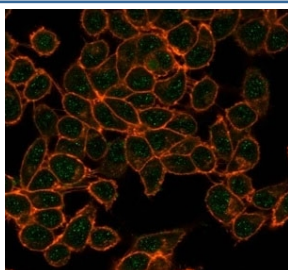


CBFB Antibody [clone PCRP-CBFB-1F6] (V8976)

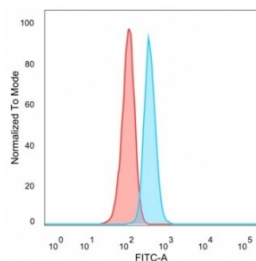
Catalog No.	Formulation	Size
V8976-100UG	0.2 mg/ml in 1X PBS with 0.1 mg/ml BSA (US sourced), 0.05% sodium azide	100 ug
V8976-20UG	0.2 mg/ml in 1X PBS with 0.1 mg/ml BSA (US sourced), 0.05% sodium azide	20 ug
V8976SAF-100UG	1 mg/ml in 1X PBS; BSA free, sodium azide free	100 ug

[Bulk quote request](#)

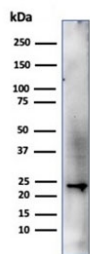
Availability	1-3 business days
Species Reactivity	Human
Format	Purified
Clonality	Monoclonal (mouse origin)
Isotype	Mouse IgG2b
Clone Name	PCRP-CBFB-1F6
Purity	Protein A/G affinity
UniProt	Q13951
Localization	Nucleus, Nucleus, Cytoplasm
Applications	ELISA (order BSA-free Format For Coating) : Western Blot : 1-2ug/ml Flow Cytometry : 1-2ug/million cells Immunofluorescence : 1-2ug/ml
Limitations	This CBFB antibody is available for research use only.



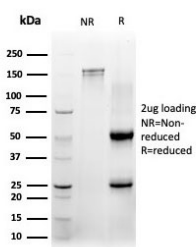
Immunofluorescent staining of PFA-fixed human HeLa cells using CBFB antibody (green, clone PCRP-CBFB-1F6) and phalloidin (red).



FACS staining of PFA-fixed human HeLa cells with CBFB antibody (blue, clone PCRP-CBFB-1F6) and isotype control (red).

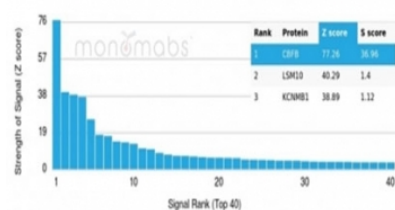


Western blot testing of human HeLa cell lysate using CBFB antibody (clone PCRP-CBFB-1F6). Predicted molecular weight ~22 kDa.



SDS-PAGE analysis of purified, BSA-free CBFB antibody (clone PCRP-CBFB-1F6) as confirmation of integrity and purity.

Human Protein Microarray Specificity Validation



Analysis of HuProt(TM) microarray containing more than 19,000 full-length human proteins using CBFB antibody (clone PCRP-CBFB-1F6). These results demonstrate the foremost specificity of the PCRP-CBFB-1F6 mAb. Z- and S- score: The Z-score represents the strength of a signal that an antibody (in combination with a fluorescently-tagged anti-IgG secondary Ab) produces when binding to a particular protein on the HuProt(TM) array. Z-scores are described in units of standard deviations (SD's) above the mean value of all signals generated on that array. If the targets on the HuProt(TM) are arranged in descending order of the Z-score, the S-score is the difference (also in units of SD's) between the Z-scores. The S-score therefore represents the relative target specificity of an Ab to its intended target.

Description

The transcription factor polyomavirus enhancer binding protein 2 (PEBP2), also designated Osf2 (osteoblast-specific transcription factor), CBFA1 (core binding factor) and AML3 (acute myeloid leukemia), is composed of two subunits, /CBFB-SMMHC, that is associated with human acute myeloid leukemia.

Application Notes

Optimal dilution of the CBFB antibody should be determined by the researcher.

Immunogen

Recombinant full-length human CBFB protein was used as the immunogen for the CBFB antibody.

Storage

Aliquot the CBFB antibody and store frozen at -20oC or colder. Avoid repeated freeze-thaw cycles.

