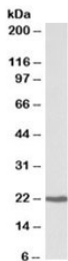


CBFB Antibody / Core-binding factor subunit beta (R33715)

Catalog No.	Formulation	Size
R33715-100UG	0.5 mg/ml in 1X TBS, pH7.3, with 0.5% BSA (US sourced) and 0.02% sodium azide	100 ug

[Bulk quote request](#)

Availability	1-3 business days
Species Reactivity	Human
Predicted Reactivity	Mouse, Dog
Format	Antigen affinity purified
Host	Goat
Clonality	Polyclonal (goat origin)
Isotype	Goat Ig
Purity	Antigen affinity
Gene ID	865
Applications	Western Blot : 0.3-1ug/ml ELISA (peptide) LOD : 1:2000
Limitations	This CBFB antibody is available for research use only.



Western blot testing of human Daudi lysate with CBFB antibody at 0.3ug/ml. Predicted molecular weight: ~22 kDa.

Description

Additional name(s) for this target protein: Core-binding factor, beta subunit

Application Notes

Optimal dilution of the CBFB antibody should be determined by the researcher.

Immunogen

Amino acids EARRQQDPSPGSN were used as the immunogen for this CFBF antibody.

Storage

Aliquot and store the CFBF antibody at -20oC.