

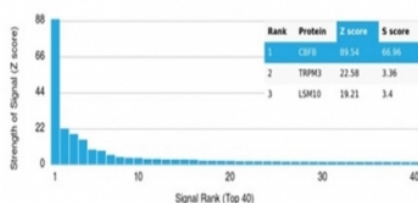
CBF beta Antibody / CBFB [clone PCRP-CBFB-1E6] (V9742)

Catalog No.	Formulation	Size
V9742-100UG	0.2 mg/ml in 1X PBS with 0.1 mg/ml BSA (US sourced), 0.05% sodium azide	100 ug
V9742-20UG	0.2 mg/ml in 1X PBS with 0.1 mg/ml BSA (US sourced), 0.05% sodium azide	20 ug
V9742SAF-100UG	1 mg/ml in 1X PBS; BSA free, sodium azide free	100 ug

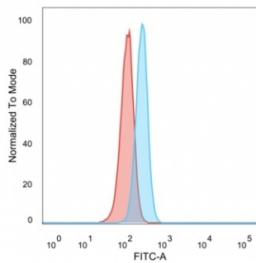
[Bulk quote request](#)

Availability	1-3 business days
Species Reactivity	Human
Format	Purified
Host	Mouse
Clonality	Monoclonal (mouse origin)
Isotype	Mouse IgG2a
Clone Name	PCRP-CBFB-1E6
Purity	Protein A/G affinity
UniProt	Q13951
Localization	Nucleus, Cytoplasm
Applications	ELISA (order BSA-free Format For Coating) : Western Blot : 1-2ug/ml Flow Cytometry : 1-2ug/million cells Immunofluorescence : 1-2ug/ml
Limitations	This CBF beta antibody is available for research use only.

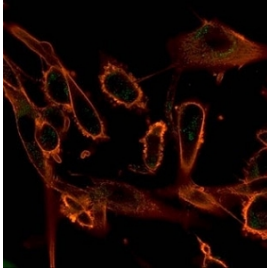
Human Protein Microarray Specificity Validation



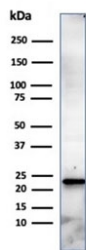
Analysis of HuProt(TM) microarray containing more than 19,000 full-length human proteins using CBF beta antibody (clone PCRP-CBFB-1E6). These results demonstrate the foremost specificity of the PCRP-CBFB-1E6 mAb. Z- and S- score: The Z-score represents the strength of a signal that an antibody (in combination with a fluorescently-tagged anti-IgG secondary Ab) produces when binding to a particular protein on the HuProt(TM) array. Z-scores are described in units of standard deviations (SD's) above the mean value of all signals generated on that array. If the targets on the HuProt(TM) are arranged in descending order of the Z-score, the S-score is the difference (also in units of SD's) between the Z-scores. The S-score therefore represents the relative target specificity of an Ab to its intended target.



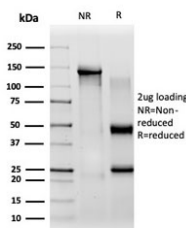
FACS staining of PFA-fixed human HeLa cells with CBF beta antibody (blue, clone PCRP-CBFB-1E6) and isotype control (red).



Immunofluorescent staining of PFA-fixed human U-87 cells using CBF beta antibody (green, clone PCRP-CBFB-1E6) and phalloidin (red).



Western blot testing of human HeLa cell lysate using CBF beta antibody (clone PCRP-CBFB-1E6). Predicted molecular weight ~22 kDa.



SDS-PAGE analysis of purified, BSA-free CBF beta antibody (clone PCRP-CBFB-1E6) as confirmation of integrity and purity.

Description

The transcription factor polyomavirus enhancer binding protein 2 (PEBP2), also designated Osf2 (osteoblast-specific transcription factor), CBFβ (core binding factor subunit beta) and AML3 (acute myeloid leukemia), is composed of two subunits and is essential for the regulation of hematopoiesis and osteogenesis.

Application Notes

Optimal dilution of the CBF beta antibody should be determined by the researcher.

Immunogen

Recombinant full-length human protein was used as the immunogen for the CBF beta antibody.

Storage

Aliquot the CBF beta antibody and store frozen at -20°C or colder. Avoid repeated freeze-thaw cycles.

