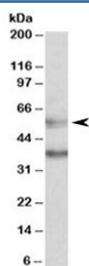


CBARA1 Antibody / MICU1 (R34047)

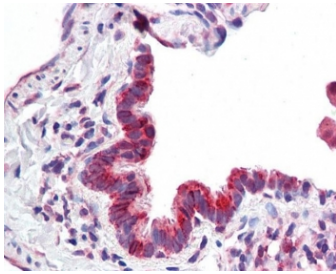
Catalog No.	Formulation	Size
R34047-100UG	0.5 mg/ml in 1X TBS, pH7.3, with 0.5% BSA (US sourced) and 0.02% sodium azide	100 ug

[Bulk quote request](#)

Availability	1-3 business days
Species Reactivity	Human
Predicted Reactivity	Mouse, Rat, Dog, Pig, Cow
Format	Antigen affinity purified
Host	Goat
Clonality	Polyclonal (goat origin)
Isotype	Goat Ig
Purity	Antigen affinity
Gene ID	10367
Localization	Cytoplasmic
Applications	Western Blot : 0.5-2ug/ml IHC (FFPE) : 3.75ug/ml ELISA (peptide) LOD : 1:32000
Limitations	This CBARA1 antibody is available for research use only.



Western blot testing of K562 lysate with CBARA1 antibody at 0.5ug/ml. Predicted molecular weight: ~55 kDa. Both observed bands are blocked with addition of the immunizing peptide.



IHC testing of FFPE human lung tissue with CBARA1 antibody at 3.75ug/ml. Required HIER: steamed antigen retrieval with pH6 citrate buffer; AP-staining.

Description

Additional name(s) for this target protein: Calcium binding atopy-related autoantigen 1; MICU1; Mitochondrial calcium uptake 1

Application Notes

Optimal dilution of the CBARA1 antibody should be determined by the researcher.

1. This CBARA1 antibody will detect isoforms 1 and 2 of the protein.

Immunogen

Amino acids EYENRIRAYSTPDK were used as the immunogen for this CBARA1 antibody.

Storage

Aliquot and store the CBARA1 antibody at -20oC.