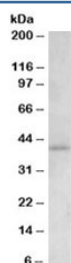


CB2 Antibody (R36169)

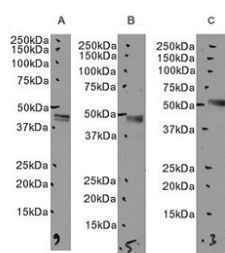
Catalog No.	Formulation	Size
R36169-100UG	0.5 mg/ml in 1X TBS, pH7.3, with 0.5% BSA (US sourced) and 0.02% sodium azide	100 ug

[Bulk quote request](#)

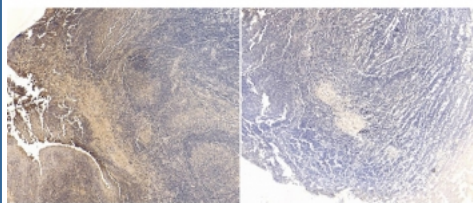
Availability	1-3 business days
Species Reactivity	Human
Format	Antigen affinity purified
Host	Goat
Clonality	Polyclonal (goat origin)
Isotype	Goat Ig
Purity	Antigen affinity
Gene ID	1269
Applications	Western Blot : 1-3ug/ml Immunohistochemistry (FFPE) : 4ug/ml ELISA (peptide) LOD : 1:32000
Limitations	This CB2 antibody is available for research use only.



Western blot testing of human hippocampus lysate with CB2 antibody at 1.5ug/ml.
Predicted molecular weight ~38 kDa.



Western blot testing of human A) hippocampus, 2) cerebellum and 3) duodenum tissue lysate with CB2 antibody. Predicted molecular weight ~38 kDa.



IHC staining of FFPE human tonsil tissue with CB2 antibody at 4ug/ml (left) and without primary antibody (right). Required HIER: steamed antigen retrieval with pH6 citrate buffer; HRP-staining.

Description

Additional name(s) for this target protein: Cannabinoid Receptor 2, CNR2

Application Notes

Optimal dilution of the CB2 antibody should be determined by the researcher.

Immunogen

Amino acids TETEADGKITPYPD were used as the immunogen for this CB2 antibody.

Storage

Aliquot and store the CB2 antibody at -20oC.