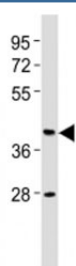


## CB2 Antibody (F53156)

Catalog No.	Formulation	Size
F53156-0.4ML	In 1X PBS, pH 7.4, with 0.09% sodium azide	0.4 ml
F53156-0.08ML	In 1X PBS, pH 7.4, with 0.09% sodium azide	0.08 ml

[Bulk quote request](#)

<b>Availability</b>	1-3 business days
<b>Species Reactivity</b>	Human
<b>Format</b>	Antigen affinity purified
<b>Host</b>	Rabbit
<b>Clonality</b>	Polyclonal (rabbit origin)
<b>Isotype</b>	Rabbit Ig
<b>Purity</b>	Antigen affinity
<b>UniProt</b>	P34972
<b>Applications</b>	Western Blot : 1:2000
<b>Limitations</b>	This CB2 antibody is available for research use only.



Western blot testing of CB2 antibody at 1:2000 dilution + human brain lysate. Predicted molecular weight ~38 kDa.

## Description

Cannabinoid receptor 2 is a heterotrimeric G protein-coupled receptor for endocannabinoid 2-arachidonoylglycerol mediating inhibition of adenylate cyclase. May function in inflammatory response, nociceptive transmission and bone homeostasis.

## Application Notes

Titration of the CB2 antibody may be required due to differences in protocols and secondary/substrate sensitivity.

## Immunogen

This CB2 antibody was produced from a rabbit immunized with a KLH conjugated synthetic peptide between 18-53 amino acids from the N-terminal region of human Cannabinoid receptor 2.

## Storage

Aliquot the CB2 antibody and store frozen at -20oC or colder. Avoid repeated freeze-thaw cycles.