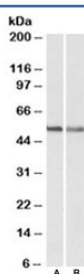


CB1 Antibody (R35984)

Catalog No.	Formulation	Size
R35984-100UG	0.5 mg/ml in 1X TBS, pH7.3, with 0.5% BSA (US sourced) and 0.02% sodium azide	100 ug

[Bulk quote request](#)

Availability	1-3 business days
Species Reactivity	Human, Mouse
Predicted Reactivity	Cow, Dog, Rat
Format	Antigen affinity purified
Clonality	Polyclonal (goat origin)
Isotype	Goat Ig
Purity	Antigen affinity
Gene ID	1268
Applications	Western Blot : 0.3-1ug/ml ELISA (peptide) LOD : 1:64000
Limitations	This CB1 antibody is available for research use only.



Western blot testing of human A549 [A] and mouse NIH3T3 [B] lysates with CB1 antibody at 0.3ug/ml. Predicted molecular weight ~53kDa, can also be observed at ~70kDa.

Description

Additional name(s) for this target protein: CB1 (isoform a), Cannabinoid receptor 1 (brain); CNR1

Application Notes

Optimal dilution of the CB1 antibody should be determined by the researcher.

Immunogen

Amino acids SNDIQYEDIKGDMS were used as the immunogen for this CB1 antibody.

Storage

Aliquot and store the CB1 antibody at -20oC.