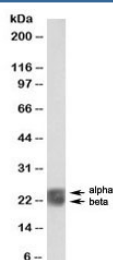


## Caveolin 1 Antibody Biotin Conjugate (R33422BTN)

Catalog No.	Formulation	Size
R33422BTN	0.5 mg/ml in 1X TBS, pH7.3, with 0.5% BSA (US sourced) and 0.02% sodium azide	100 ug

[Bulk quote request](#)

Availability	1-3 business days
Species Reactivity	Human
Predicted Reactivity	Dog, Mouse, Pig, Rat
Format	Biotin Conjugate
Clonality	Polyclonal (goat origin)
Isotype	Goat Ig
Purity	Antigen affinity
Gene ID	857
Applications	Western Blot : 1-3ug/ml ELISA (peptide) LOD : 1:8000
Limitations	This Caveolin 1 antibody is available for research use only.



Western blot testing of human spleen lysate with biotinylated Caveolin 1 antibody at 1ug/ml. Alpha and beta CAV1 differ by 30 amino acids at the N-terminus.

### Description

Additional name(s) for this target protein: CAV1

### Application Notes

Optimal dilution of the Caveolin 1 antibody should be determined by the researcher.

1. This Caveolin 1 antibody does not detect Caveolin 2 or 3.

## Immunogen

Amino acids DELSEKQVYDAH were used as the immunogen for this Caveolin 1 antibody.

## Storage

Aliquot and store the Caveolin 1 antibody at -20oC.