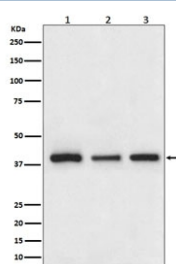


Cathepsin L/V/K/H Antibody [clone AACD-3] (RQ5182)

Catalog No.	Formulation	Size
RQ5182	Antibody in PBS with 0.02% sodium azide, 50% glycerol and 0.4-0.5mg/ml BSA	100 ul

[Bulk quote request](#)

Availability	1-2 weeks
Species Reactivity	Human, Mouse, Rat
Format	Purified
Clonality	Rabbit Monoclonal
Isotype	Rabbit IgG
Clone Name	AACD-3
Purity	Affinity purified
UniProt	P07711
Applications	Western Blot : 1:500-1:2000
Limitations	This Cathepsin L/V/K/H antibody is available for research use only.



Western blot testing of 1) human HepG2, 2) mouse NIH3T3 and 3) rat PC-12 cell lysate with Cathepsin L/V/K/H antibody.

Description

Cathepsins are proteases (enzymes that degrade proteins) found in all animals as well as other organisms. There are approximately a dozen members of this family, which are distinguished by their structure, catalytic mechanism, and which proteins they cleave. Most of the members become activated at the low pH found in lysosomes. Thus, the activity of this family lies almost entirely within those organelles. There are, however, exceptions such as cathepsin K, which works extracellularly after secretion by osteoclasts in bone resorption. Cathepsins have a vital role in mammalian cellular turnover. [Wiki]

Application Notes

Optimal dilution of the Cathepsin L/V/K/H antibody should be determined by the researcher.

Immunogen

A synthetic peptide common to human Cathepsin L/V/K/H was used as the immunogen for the Cathepsin L/V/K/H antibody.

Storage

Store the Cathepsin L/V/K/H antibody at -20oC.