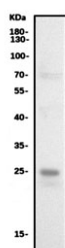


## Cathepsin L Antibody [clone 33/2] (R30013)

Catalog No.	Formulation	Size
R30013	0.5mg/ml with 1% BSA and 0.01% sodium azide if reconstituted with 0.2ml sterile 1X PBS	100 ug

[Bulk quote request](#)

Availability	1-3 business days
Species Reactivity	Human, Mouse, Rat
Format	Ascites
Clonality	Monoclonal (mouse origin)
Isotype	Mouse IgG1
Clone Name	33/2
Purity	Ascites
Gene ID	1514
Applications	Western Blot : 0.5-1ug/ml Immunohistochemistry (Frozen) : 4ug/ml-formalin/acetone fixed tissues
Limitations	This Cathepsin L antibody is available for research use only.



Western blot testing of human A549 cell lysate with Cathepsin L antibody. Expected molecular weight: 38-41 kDa with multiple smaller processed/active forms.

## Description

Cathepsin L is a lysosomal cysteine proteinase with a major role in intracellular protein catabolism. It also shows the most potent collagenolytic and elastinolytic activity in vitro of any of the cathepsins. Cathepsin L has been implicated in pathologic processes including myofibril necrosis in myopathies and in myocardial ischemia, and in the renal tubular response to proteinuria. Human liver cathepsin L consists of a heavy chain of about 25 kD and a light chain of about 5 kD. The gene is mapped to 9q21-q22. Cathepsin L is required for endothelial progenitor cell-induced neovascularization.

## Application Notes

The stated application concentrations are suggested starting amounts. Titration of the Cathepsin L antibody may be required due to differences in protocols and secondary/substrate sensitivity.

## Immunogen

Procathepsin L isolated from the human lung cancer cell line EPLC 32M1 was used as the immunogen for this Cathepsin L antibody.

## Storage

After reconstitution, the Cathepsin L antibody can be stored for up to one month at 4oC. For long-term, aliquot and store at -20oC. Avoid repeated freezing and thawing.