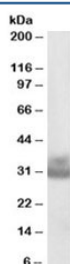


Cathepsin F Antibody (R33242)

Catalog No.	Formulation	Size
R33242-100UG	0.5 mg/ml in 1X TBS, pH7.3, with 0.5% BSA (US sourced) and 0.02% sodium azide	100 ug

[Bulk quote request](#)

Availability	1-3 business days
Species Reactivity	Human
Predicted Reactivity	Mouse, Rat, Dog
Format	Antigen affinity purified
Clonality	Polyclonal (goat origin)
Isotype	Goat Ig
Purity	Antigen affinity
Gene ID	8722
Applications	Western Blot : 0.3-1ug/ml ELISA (peptide) LOD : 1:32000
Limitations	This Cathepsin F antibody is available for research use only.



Western blot testing of human ovary lysate with Cathepsin F antibody at 0.3ug/ml. CTSF is synthesized as a ~53 kDa precursor; processing is described (JeriÄ• et al., 2013) and smaller fragments are reported, though published WB images with ~30-35 kDa bands are limited. The ~30-35 kDa species observed here is therefore consistent with a mature or trimmed CTSF form, but has less direct precedent in the literature than the non-processed band.

Description

Additional name(s) for this target protein: CTSF; CATSF

Application Notes

Optimal dilution of the Cathepsin F antibody should be determined by the researcher.

Immunogen

Amino acids CGVNTMASSAVVD were used as the immunogen for this Cathepsin F antibody.

Storage

Aliquot and store the Cathepsin F antibody at -20oC.