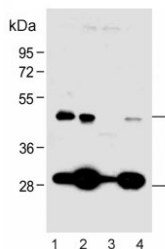


## Cathepsin D Antibody / CTSD (F54746)

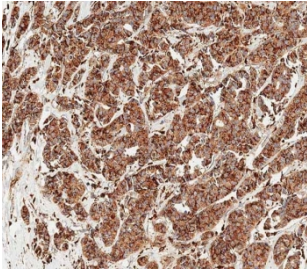
Catalog No.	Formulation	Size
F54746-0.4ML	In 1X PBS, pH 7.4, with 0.09% sodium azide	0.4 ml
F54746-0.08ML	In 1X PBS, pH 7.4, with 0.09% sodium azide	0.08 ml

[Bulk quote request](#)

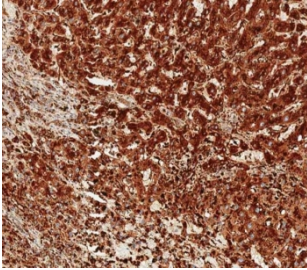
<b>Availability</b>	1-3 business days
<b>Species Reactivity</b>	Human
<b>Format</b>	Purified
<b>Host</b>	Rabbit
<b>Clonality</b>	Polyclonal (rabbit origin)
<b>Isotype</b>	Rabbit Ig
<b>Purity</b>	Antigen affinity purified
<b>UniProt</b>	P07339
<b>Localization</b>	Cytoplasmic
<b>Applications</b>	Western Blot : 1:500-1:2000 Immunofluorescence : 1:25 Immunohistochemistry (FFPE) : 1:25
<b>Limitations</b>	This Cathepsin D antibody is available for research use only.



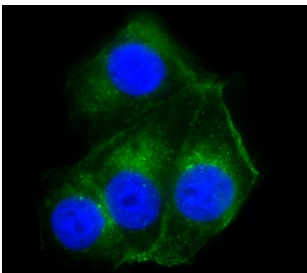
Western blot testing of human 1) A431, 2) MCF7, 3) K562 and 4) PANC-1 cell lysate with Cathepsin D antibody. Expected molecular weight: 43-46 kDa, 28 kDa (heavy chain), 15 kDa (light chain).



IHC testing of FFPE human breast carcinoma tissue with Cathepsin D antibody. HIER: steam section in pH9 EDTA for 20 min and allow to cool prior to staining.



IHC testing of FFPE human liver tissue with Cathepsin D antibody. HIER: steam section in pH9 EDTA for 20 min and allow to cool prior to staining.



Immunofluorescent staining of fixed and permeabilized human MCF7 cells with Cathepsin D antibody (green) and DAPI nuclear stain (blue).

## Description

Acid protease active in intracellular protein breakdown. Involved in the pathogenesis of several diseases such as breast cancer and possibly Alzheimer disease.

This antibody can be compared with our [Cathepsin D Antibody / CTSD Antibody](#) (clone CTSD/3276) as a central reference for consistent CTSD detection across multiple assay formats.

## Application Notes

The stated application concentrations are suggested starting points. Titration of the Cathepsin D antibody may be required due to differences in protocols and secondary/substrate sensitivity.

## Immunogen

A portion of amino acids 1-412 from the human protein was used as the immunogen for the Cathepsin D antibody.

## Storage

Aliquot the Cathepsin D antibody and store frozen at -20°C or colder. Avoid repeated freeze-thaw cycles.

