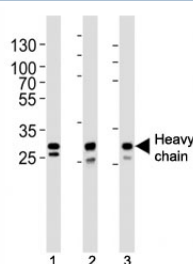


Cathepsin D Antibody / CTSD (F52754)

| Catalog No. | Formulation | Size |
|---------------|--|---------|
| F52754-0.4ML | In 1X PBS, pH 7.4, with 0.09% sodium azide | 0.4 ml |
| F52754-0.08ML | In 1X PBS, pH 7.4, with 0.09% sodium azide | 0.08 ml |

Bulk quote request

| | |
|-----------------------------|---|
| Availability | 1-3 business days |
| Species Reactivity | Human |
| Predicted Reactivity | Bovine, Mouse |
| Format | Antigen affinity purified |
| Clonality | Polyclonal (rabbit origin) |
| Isotype | Rabbit Ig |
| Purity | Antigen affinity |
| UniProt | P07339 |
| Applications | Western Blot : 1:1000 |
| Limitations | This Cathepsin D antibody is available for research use only. |



Description

Cathepsin D is an acid protease active in intracellular protein breakdown. Involved in the pathogenesis of several diseases such as breast cancer and possibly Alzheimer disease. [UniProt]

Application Notes

Titration of the Cathepsin D antibody may be required due to differences in protocols and secondary/substrate sensitivity.

Immunogen

This Cathepsin D antibody was produced from a rabbit immunized with a KLH conjugated synthetic peptide between 241-273 amino acids from the heavy chain region of human CTSD.

Storage

Aliquot the Cathepsin D antibody and store frozen at -20oC or colder. Avoid repeated freeze-thaw cycles.