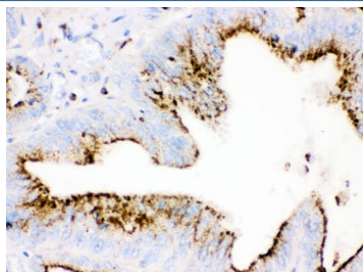


## Cathepsin D Antibody / CTSD [clone CP-D13] (R30012)

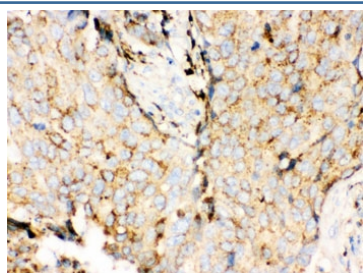
Catalog No.	Formulation	Size
R30012	0.5mg/ml with 1% BSA and 0.01% sodium azide if reconstituted with 0.2ml sterile 1X PBS	100 ug

[Bulk quote request](#)

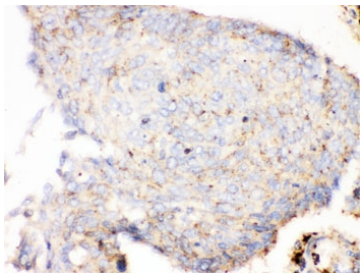
Availability	1-3 business days
Species Reactivity	Human
Format	Ascites
Clonality	Monoclonal (mouse origin)
Isotype	Mouse IgG2a
Clone Name	CP-D13
Purity	Ascites
Gene ID	1509
Localization	Cytoplasmic
Applications	Western Blot : 0.5-1ug/ml IHC (FFPE) : 1-2ug/ml
Limitations	This Cathepsin D antibody is available for research use only.



IHC testing of FFPE human intestinal cancer tissue with Cathepsin D antibody. HIER: steamed with pH6 citrate buffer, HRP-staining.



IHC testing of FFPE human breast cancer tissue with Cathepsin D antibody. HIER: steamed with pH6 citrate buffer, HRP-staining.



IHC testing of FFPE human lung cancer tissue with Cathepsin D antibody. HIER: steamed with pH6 citrate buffer, HRP-staining.

## Description

Cathepsin D is one of the lysosomal proteinases. It is ubiquitously expressed and is involved in proteolytic degradation, cell invasion, and apoptosis. Cathepsin D is mapped to chromosome 11. The amino acid sequence predicted from the cDNA sequence shows that human cathepsin D consists of 412 amino acids with 20 and 44 amino acids in a pre- and a prosegment, respectively.

## Application Notes

Titration of the Cathepsin D antibody may be required due to differences in protocols and secondary/substrate sensitivity.

## Immunogen

Human liver cathepsin D was used as the immunogen for this Cathepsin D antibody.

## Storage

After reconstitution, the Cathepsin D antibody can be stored at 4°C to -20°C. For long-term, aliquot and store at -20°C. Avoid repeated freeze/thaws.