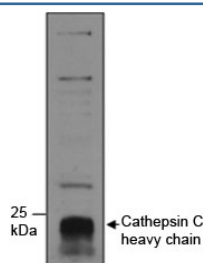


## Cathepsin C Antibody (R35701)

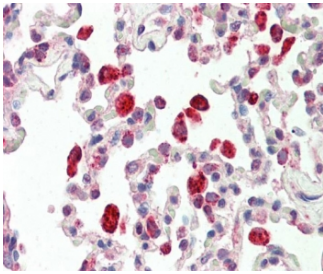
Catalog No.	Formulation	Size
R35701-100UG	0.5 mg/ml in 1X TBS, pH7.3, with 0.5% BSA (US sourced) and 0.02% sodium azide	100 ug

[Bulk quote request](#)

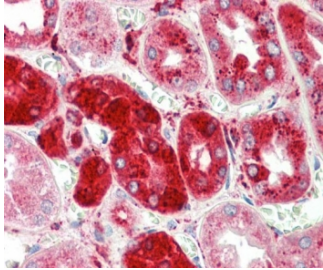
Availability	1-3 business days
Species Reactivity	Human
Format	Antigen affinity purified
Host	Goat
Clonality	Polyclonal (goat origin)
Isotype	Goat Ig
Purity	Antigen affinity
Gene ID	1075
Localization	Cytoplasmic
Applications	Western Blot : 1-3ug/ml Immunohistochemistry (FFPE) : 5ug/ml ELISA (peptide) LOD : 1:128000
Limitations	This Cathepsin C antibody is available for research use only.



Western blot testing of human neutrophils lysate with Cathepsin C antibody at 1ug/ml. The ~55 kDa proenzyme form is processed into ~25 kDa and 8 kDa chains.



IHC testing of FFPE human lung tissue with Cathepsin C antibody at 5ug/ml. Required HIER: steamed antigen retrieval with pH6 citrate buffer; AP-staining.



IHC testing of FFPE human kidney tissue with Cathepsin C antibody at 5ug/ml. Required HIER: steamed antigen retrieval with pH6 citrate buffer; AP-staining.

## Description

Additional name(s) for this target protein: CTSC, DPPI, DPP1, dipeptidyl peptidase I

## Application Notes

Optimal dilution of the Cathepsin C antibody should be determined by the researcher.

1. Only isoform 1 (a) will be detected with this Ab.

## Immunogen

Amino acids RNVHGINFVSPVRNQ were used as the immunogen for this Cathepsin C antibody.

## Storage

Aliquot and store the Cathepsin C antibody at -20oC.