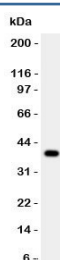


Cathepsin B Antibody / CTSB (R31477)

Catalog No.	Formulation	Size
R31477	0.5mg/ml if reconstituted with 0.2ml sterile DI water	100 ug

Bulk quote request

Availability	1-3 business days
Species Reactivity	Human
Format	Antigen affinity purified
Clonality	Polyclonal (rabbit origin)
Isotype	Rabbit IgG
Purity	Antigen affinity
Buffer	Lyophilized from 1X PBS with 2.5% BSA and 0.025% sodium azide
Gene ID	1508
Applications	Western Blot : 0.5-1ug/ml
Limitations	This Cathepsin B antibody is available for research use only.



Western blot testing of Cathepsin B antibody and human HepG2 lysate. Molecular weight: 38-46 kDa depending on glycosylation level. An ~31 kDa form (propeptide removed) may be observed and may be further processed into an ~25 kDa heavy chain and ~5 kDa light chain.

Description

Cathepsin B is an enzymatic protein belonging to the peptidase or protease families. In humans, it is coded by the CTSB gene. The protein encoded by this gene is a lysosomal cysteine proteinase composed of a dimer of disulfide-linked heavy and light chains, both produced from a single protein precursor. It is a member of the peptidase C1 family. Cathepsin B was once suspected as a candidate protease participating in the conversion of beta-amyloid precursor protein into the amyloid plaques found in Alzheimers disease patients. However, this function is now known to be mediated by BACE1 protease. It is now thought that Cathepsin B can degrade beta-amyloid precursor protein into harmless fragments. Thus, it is conceivable cathepsin B may play a pivotal role in the natural defense against Alzheimers disease. Overexpression has been associated with esophageal adenocarcinoma and other tumors. At least five transcript variants encoding the same

protein have been found for this gene.

Application Notes

The stated application concentrations are suggested starting amounts. Titration of the Cathepsin B antibody may be required due to differences in protocols and secondary/substrate sensitivity.

Immunogen

Human partial recombinant protein (AA 80-333) was used as the immunogen for this Cathepsin B antibody.

Storage

After reconstitution, the Cathepsin B antibody can be stored for up to one month at 4oC. For long-term, aliquot and store at -20oC. Avoid repeated freezing and thawing.