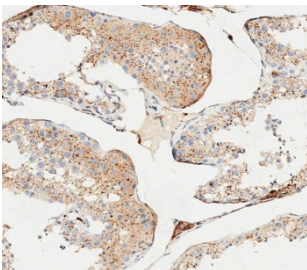


Cathepsin A Antibody / CTSA (F54269)

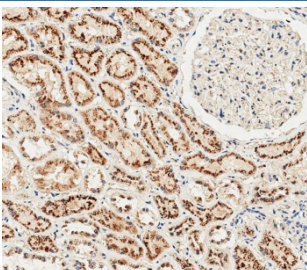
Catalog No.	Formulation	Size
F54269-0.4ML	In 1X PBS, pH 7.4, with 0.09% sodium azide	0.4 ml
F54269-0.08ML	In 1X PBS, pH 7.4, with 0.09% sodium azide	0.08 ml

[Bulk quote request](#)

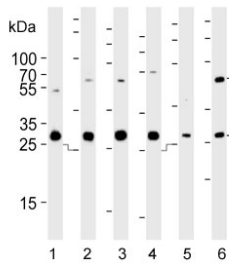
Availability	1-3 business days
Species Reactivity	Human, Mouse
Format	Purified
Host	Rabbit
Clonality	Polyclonal (rabbit origin)
Isotype	Rabbit Ig
Purity	Antigen affinity purified
UniProt	P10619
Localization	Cytoplasmic
Applications	Western Blot : 1:500-1:2000 Immunohistochemistry (FFPE) : 1:25
Limitations	This Cathepsin A antibody is available for research use only.



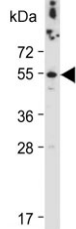
IHC testing of FFPE human testis tissue with Cathepsin A antibody. HIER: steam section in pH6 citrate buffer for 20 min and allow to cool prior to staining.



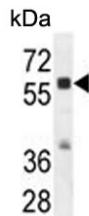
IHC testing of FFPE human kidney tissue with Cathepsin A antibody. HIER: steam section in pH6 citrate buffer for 20 min and allow to cool prior to staining.



Western blot testing of human 1) A431, 2) HeLa, 3) HepG2, 4) HT-1080, 5) placenta and 6) kidney lysate with Cathepsin A antibody. Expected molecular weight: ~54 kDa precursor, 32 kDa (large subunit).



Western blot testing of human HEK293 cell lysate with Cathepsin A antibody. Expected molecular weight: ~54 kDa precursor, 32 kDa (large subunit).



Western blot testing of mouse bladder lysate with Cathepsin A antibody. Expected molecular weight: ~54 kDa precursor, 32 kDa (large subunit).

Description

CTSA encodes a glycoprotein which associates with lysosomal enzymes beta-galactosidase and neuraminidase to form a complex of high molecular weight multimers. The formation of this complex provides a protective role for stability and activity. Deficiencies in this gene are linked to multiple forms of galactosialidosis.

Application Notes

The stated application concentrations are suggested starting points. Titration of the Cathepsin A antibody may be required due to differences in protocols and secondary/substrate sensitivity.

Immunogen

A portion of amino acids 18-45 from the human protein were used as the immunogen for the Cathepsin A antibody.

Storage

Aliquot the Cathepsin A antibody and store frozen at -20°C or colder. Avoid repeated freeze-thaw cycles.

