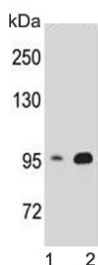


Catenin Beta Antibody / CTNNB1 (F54475)

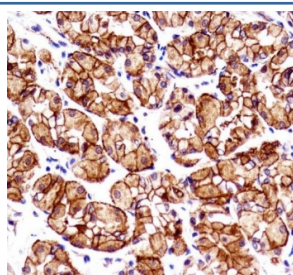
Catalog No.	Formulation	Size
F54475-0.4ML	In 1X PBS, pH 7.4, with 0.09% sodium azide	0.4 ml
F54475-0.08ML	In 1X PBS, pH 7.4, with 0.09% sodium azide	0.08 ml

Bulk quote request

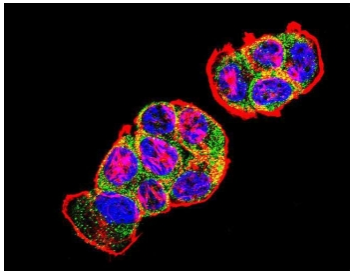
Availability	1-3 business days
Species Reactivity	Human
Format	Purified
Clonality	Polyclonal (rabbit origin)
Isotype	Rabbit Ig
Purity	Antigen affinity purified
UniProt	P35222
Applications	Immunofluorescence : 1:25 Flow Cytometry : 1:25 (1x10 ⁶ cells) Immunohistochemistry (FFPE) : 1:25 Western Blot : 1:500-1:2000
Limitations	This Catenin Beta antibody is available for research use only.



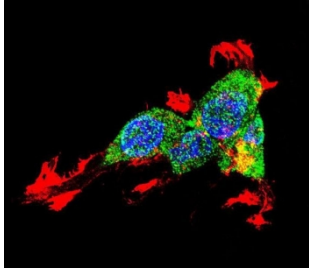
Western blot testing of human 1) HEK293 and 2) T-47D cell lysate with Catenin Beta antibody. Predicted molecular weight ~85 kDa, but routinely observed at 90-95 kDa.



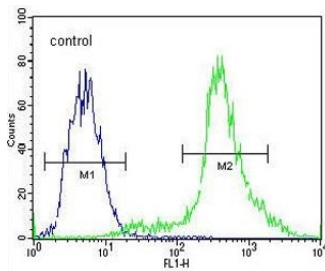
IHC testing of FFPE human stomach tissue with Catenin Beta antibody. HIER: steam section in pH6 citrate buffer for 20 min and allow to cool prior to staining.



Immunofluorescent staining of human T-47D cells with Catenin Beta antibody (green), DAPI nuclear stain (blue) and anti-Actin (red).



Immunofluorescent staining of human HEK293 cells with Catenin Beta antibody (green), DAPI nuclear stain (blue) and anti-Actin (red).



Flow cytometry testing of human HEK293 cells with Catenin Beta antibody; Blue=isotype control, Green= Catenin Beta antibody.

Description

The protein encoded by this gene is part of a complex of proteins that constitute adherens junctions (AJs). AJs are necessary for the creation and maintenance of epithelial cell layers by regulating cell growth and adhesion between cells. The encoded protein also anchors the actin cytoskeleton and may be responsible for transmitting the contact inhibition signal that causes cells to stop dividing once the epithelial sheet is complete. Finally, this protein binds to the product of the APC gene, which is mutated in adenomatous polyposis of the colon. Mutations in this gene are a cause of colorectal cancer (CRC), pilomatixoma (PTR), medulloblastoma (MDB), and ovarian cancer. Three transcript variants encoding the same protein have been found for this gene.

Application Notes

The stated application concentrations are suggested starting points. Titration of the Catenin Beta antibody may be required due to differences in protocols and secondary/substrate sensitivity.

Immunogen

A portion of amino acids 78-106 from the human protein was used as the immunogen for the Catenin Beta antibody.

Storage

Aliquot the Catenin Beta antibody and store frozen at -20oC or colder. Avoid repeated freeze-thaw cycles.

