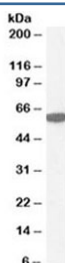


## Catalase Antibody (R33518)

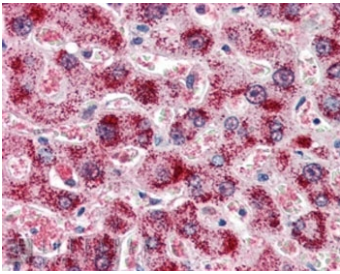
Catalog No.	Formulation	Size
R33518-100UG	0.5 mg/ml in 1X TBS, pH7.3, with 0.5% BSA (US sourced) and 0.02% sodium azide	100 ug

[Bulk quote request](#)

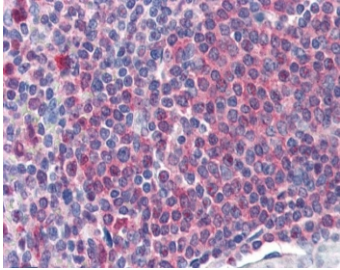
Availability	1-3 business days
Species Reactivity	Human, Mouse, Rat
Predicted Reactivity	Dog
Format	Antigen affinity purified
Host	Goat
Clonality	Polyclonal (goat origin)
Isotype	Goat Ig
Purity	Antigen affinity
Gene ID	847
Applications	Western Blot : 0.3-1ug/ml Immunohistochemistry (FFPE) : 2-4ug/ml ELISA (peptide) LOD : 1:32000
Limitations	This Catalase antibody is available for research use only.



Western blot testing of human kidney lysate with Catalase antibody at 1ug/ml. Predicted molecular weight ~60 kDa.



IHC staining of FFPE human liver with Catalase antibody at 2ug/ml. HIER: steamed with pH6 citrate buffer, AP-staining.



IHC staining of FFPE human spleen with Catalase antibody at 2ug/ml. HIER: steamed with pH6 citrate buffer, AP-staining.

## Description

Additional name(s) for this target protein: CAT

## Application Notes

Optimal dilution of the Catalase antibody should be determined by the researcher.

## Immunogen

Amino acids DKYNAEKPKNAIHT were used as the immunogen for this Catalase antibody.

## Storage

Aliquot and store the Catalase antibody at -20oC.