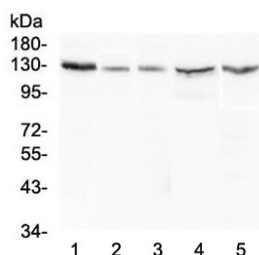


## CASR Antibody / Calcium Sensing Receptor [clone 11E9.] (RQ4484)

Catalog No.	Formulation	Size
RQ4484	0.5mg/ml if reconstituted with 0.2ml sterile DI water	100 ug

**Bulk quote request**

<b>Availability</b>	1-3 business days
<b>Species Reactivity</b>	Human
<b>Format</b>	Purified
<b>Clonality</b>	Monoclonal (mouse origin)
<b>Isotype</b>	Mouse IgG2b
<b>Clone Name</b>	11E9.
<b>Purity</b>	Protein G affinity
<b>Buffer</b>	Lyophilized from 1X PBS with 2% Trehalose and 0.025% sodium azide
<b>UniProt</b>	P41180
<b>Localization</b>	Cell membrane
<b>Applications</b>	Western Blot : 0.5-1ug/ml
<b>Limitations</b>	This CASR antibody is available for research use only.



Western blot testing of human 1) HeLa, 2) A549, 3) 22RV1, 4) HepG2 and 5) Caco-2 lysate with CASR antibody at 0.5ug/ml. Predicted molecular weight ~121 kDa, but is routinely observed at up to ~160 kDa.

## Description

The calcium-sensing receptor (CaSR) is a G protein-coupled receptor that is expressed in the parathyroid hormone (PTH)-producing chief cells of the parathyroid gland, and the cells lining the kidney tubule. It senses small changes in circulating calcium concentration and couples this information to intracellular signaling pathways that modify PTH secretion or renal cation handling, thus this protein plays an essential role in maintaining mineral ion homeostasis. Mutations in this gene cause familial hypocalciuric hypercalcemia, familial, isolated hypoparathyroidism, and neonatal

severe primary hyperparathyroidism.

## **Application Notes**

Optimal dilution of the CASR antibody should be determined by the researcher.

## **Immunogen**

Human CASR recombinant protein (amino acids Q926-S1078) was used as the immunogen for the CASR antibody.

## **Storage**

After reconstitution, the CASR antibody can be stored for up to one month at 4oC. For long-term, aliquot and store at -20oC. Avoid repeated freezing and thawing.