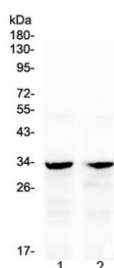


Caspase-6 Antibody (R32928)

Catalog No.	Formulation	Size
R32928	0.5mg/ml if reconstituted with 0.2ml sterile DI water	100 ug

Bulk quote request

Availability	1-3 business days
Species Reactivity	Mouse, Rat
Predicted Reactivity	Human
Format	Antigen affinity purified
Clonality	Polyclonal (rabbit origin)
Isotype	Rabbit IgG
Purity	Antigen affinity
Buffer	Lyophilized from 1X PBS with 2% Trehalose
UniProt	P55212
Localization	Cytoplasmic
Applications	Western Blot : 0.5-1ug/ml
Limitations	This Caspase-6 antibody is available for research use only.



Western blot testing of 1) rat kidney and 2) mouse kidney with Caspase-6 antibody at 0.5ug/ml. Predicted molecular weight ~33 kDa (precursor).

Description

Caspase 6 is an enzyme that in humans is encoded by the CASP6 gene. This gene encodes a protein that is a member of the cysteine-aspartic acid protease (caspase) family. Using radiation hybrid mapping, the CASP6 gene is localized to human chromosome 4q25-q26. It functions as a downstream enzyme in the caspase activation cascade. And CASP6 can cleave lamin A to its signature apoptotic fragment.

Application Notes

Optimal dilution of the Caspase-6 antibody should be determined by the researcher.

Immunogen

A recombinant human protein corresponding to amino acids A194-N293 was used as the immunogen for the Caspase-6 antibody.

Storage

After reconstitution, the Caspase-6 antibody can be stored for up to one month at 4°C. For long-term, aliquot and store at -20°C. Avoid repeated freezing and thawing.