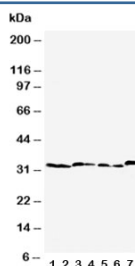


Caspase-6 Antibody (R30513)

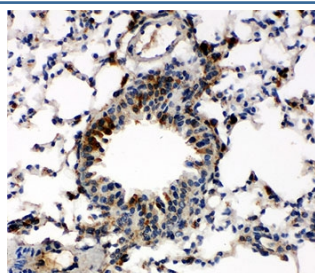
Catalog No.	Formulation	Size
R30513	0.5mg/ml if reconstituted with 0.2ml sterile DI water	100 ug

Bulk quote request

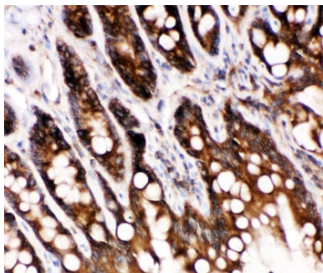
Availability	1-3 business days
Species Reactivity	Mouse, Rat
Format	Antigen affinity purified
Clonality	Polyclonal (rabbit origin)
Isotype	Rabbit IgG
Purity	Antigen affinity
Buffer	Lyophilized from 1X PBS with 2.5% BSA and 0.025% sodium azide/thimerosal
UniProt	O35397
Localization	Cytoplasmic
Applications	Western Blot : 0.5-1ug/ml IHC (FFPE) : 0.5-1ug/ml IHC (Frozen) : 0.5-1ug/ml
Limitations	This Caspase-6 antibody is available for research use only.



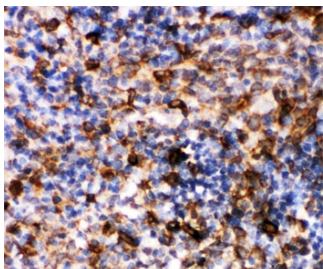
Western blot testing of Caspase-6 antibody and Lane 1: rat liver; 2: rat kidney; 3: rat testis; 4: NRK; 5: mouse liver; 6: mouse kidney; 7: mouse testis tissue lysate. Predicted molecular weight: ~33 kDa (precursor).



IHC-P: Caspase-6 antibody testing of mouse lung tissue



IHC-P: Caspase-6 antibody testing of rat intestine tissue



IHC-P: Caspase-6 antibody testing of rat spleen tissue

Description

Caspase-6 is an enzyme that in humans is encoded by the CASP6 gene. This gene encodes a protein that is a member of the cysteine-aspartic acid protease family. Using radiation hybrid mapping, the CASP6 gene was localized to human chromosome 4q25-q26. It functions as a downstream enzyme in the caspase activation cascade, and can cleave Lamin A to its signature apoptotic fragment.

Application Notes

The stated application concentrations are suggested starting points. Titration of the Caspase-6 antibody may be required due to differences in protocols and secondary/substrate sensitivity.

Immunogen

Amino acids 7-27 (FYRSREVLDPAEQYKMDHKRR-rat) were used as the immunogen for this Caspase-6 antibody.

Storage

After reconstitution, the Caspase-6 antibody can be stored for up to one month at 4°C. For long-term, aliquot and store at -20°C. Avoid repeated freezing and thawing.