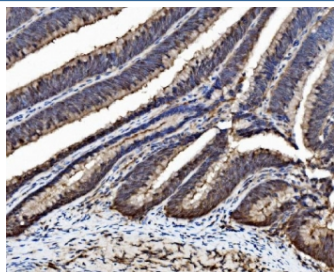


## Caspase-6 Antibody (R30512)

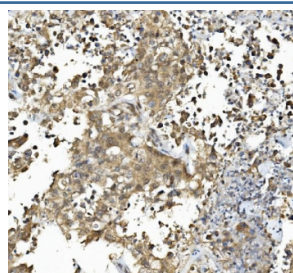
Catalog No.	Formulation	Size
R30512	0.5mg/ml if reconstituted with 0.2ml sterile DI water	100 ug

**Bulk quote request**

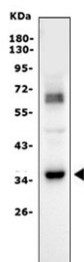
<b>Availability</b>	1-3 business days
<b>Species Reactivity</b>	Human
<b>Format</b>	Antigen affinity purified
<b>Clonality</b>	Polyclonal (rabbit origin)
<b>Isotype</b>	Rabbit IgG
<b>Purity</b>	Antigen affinity
<b>Buffer</b>	Lyophilized from 1X PBS with 2% Trehalose
<b>UniProt</b>	P55212
<b>Localization</b>	Cytoplasmic
<b>Applications</b>	Western Blot : 0.5-1ug/ml Immunohistochemistry (FFPE) : 2-5ug/ml Flow Cytometry : 1-3ug/million cells
<b>Limitations</b>	This Caspase-6 antibody is available for research use only.



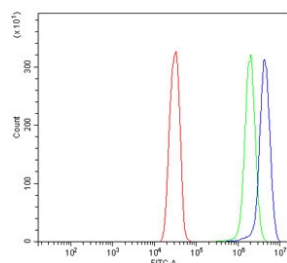
IHC staining of FFPE human colorectal adenocarcinoma tissue with Caspase-6 antibody. HIER: boil tissue sections in pH8 EDTA for 20 min and allow to cool before testing.



IHC staining of FFPE human pancreatic cancer tissue with Caspase-6 antibody. HIER: boil tissue sections in pH8 EDTA for 20 min and allow to cool before testing.



Western blot testing of human Jurkat cell lysate with Caspase-6 antibody. Predicted molecular weight: ~33 kDa (precursor).



Flow cytometry testing of human SiHa cells with Caspase-6 antibody at 1ug/million cells (blocked with goat sera); Red=cells alone, Green=isotype control, Blue= Caspase-6 antibody.

## Description

Caspase-6 is an enzyme that in humans is encoded by the CASP6 gene. This gene encodes a protein that is a member of the cysteine-aspartic acid protease family. Using radiation hybrid mapping, the CASP6 gene was localized to human chromosome 4q25-q26. It functions as a downstream enzyme in the caspase activation cascade, and can cleave Lamin A to its signature apoptotic fragment.

## Application Notes

The stated application concentrations are suggested starting points. Titration of the Caspase-6 antibody may be required due to differences in protocols and secondary/substrate sensitivity.

## Immunogen

Amino acids 24-44 (AFYKREMFDPAEKYKMDHRRR-human) were used as the immunogen for this Caspase-6 antibody. This sequence is from the large subunit.

## Storage

After reconstitution, the Caspase-6 antibody can be stored for up to one month at 4°C. For long-term, aliquot and store at -20°C. Avoid repeated freezing and thawing.