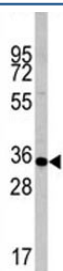


Caspase-6 Antibody (F42752)

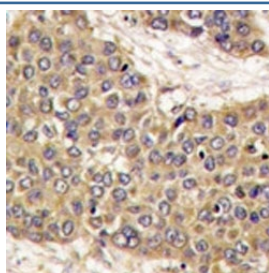
Catalog No.	Formulation	Size
F42752-0.4ML	In 1X PBS, pH 7.4, with 0.09% sodium azide	0.4 ml
F42752-0.08ML	In 1X PBS, pH 7.4, with 0.09% sodium azide	0.08 ml

Bulk quote request

Availability	1-3 business days
Species Reactivity	Human, Mouse
Predicted Reactivity	Rat, Bovine
Format	Antigen affinity purified
Clonality	Polyclonal (rabbit origin)
Isotype	Rabbit Ig
Purity	Antigen affinity
UniProt	P55212
Applications	Western Blot : 1:1000 IHC (Paraffin) : 1:10-1:50
Limitations	This Caspase-6 antibody is available for research use only.



Western blot analysis of Caspase-6 antibody and mouse liver tissue lysate. Predicted molecular weight: ~33 kDa (precursor).



IHC analysis of FFPE human hepatocarcinoma tissue stained with Caspase-6 antibody

Description

CASP6 is a member of the cysteine-aspartic acid protease (caspase) family. Sequential activation of caspases plays a central role in the execution-phase of cell apoptosis. Caspases exist as inactive proenzymes which undergo proteolytic processing at conserved aspartic residues to produce 2 subunits, large and small, that dimerize to form the active enzyme. This protein could be processed by caspases 7, 8 and 10, and is thought to function as a downstream enzyme in the caspase activation cascade.

Application Notes

Titration of the Caspase-6 antibody may be required due to differences in protocols and secondary/substrate sensitivity.

Immunogen

A portion of amino acids 235-263 from the human protein was used as the immunogen for this Caspase-6 antibody.

Storage

Aliquot the Caspase-6 antibody and store frozen at -20oC or colder. Avoid repeated freeze-thaw cycles.