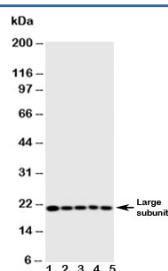


Caspase-4 Antibody (large subunit) (R30563)

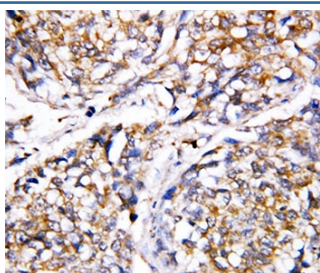
Catalog No.	Formulation	Size
R30563	0.5mg/ml if reconstituted with 0.2ml sterile DI water	100 ug

Bulk quote request

Availability	1-3 business days
Species Reactivity	Human
Format	Antigen affinity purified
Host	Rabbit
Clonality	Polyclonal (rabbit origin)
Isotype	Rabbit IgG
Purity	Antigen affinity
Buffer	Lyophilized from 1X PBS with 2.5% BSA and 0.025% sodium azide/thimerosal
UniProt	P49662
Applications	Western Blot : 0.5-1ug/ml IHC (FFPE) : 0.5-1ug/ml
Limitations	This Caspase-4 antibody is available for research use only.



Western blot testing of human 1) MCF-7, 2) HeLa, 3) Jurkat, 4) CCRF-CEM, 5) SW620 cell lysate with Caspase-4 antibody. Expected molecular weight ~43 kDa (precursor), ~30 kDa (pro domain + large subunit), ~20 kDa (large subunit).



IHC-P: Caspase-4 antibody testing of human breast cancer tissue

Description

Caspase-4 is an enzyme that proteolytically cleaves other proteins at an aspartic acid residue, and belongs to a family of cysteine proteases called caspases. The CASP4 gene is mapped to a P1 clone containing the ICE gene, which is located at chromosome 11q22.2-q22.3. It contains 8 coding exons. The function of Caspase-4 is not fully known, but it is believed to be an inflammatory caspase, along with CASP1, CASP5 and the murine homolog CASP11, with a role in the immune system.

Application Notes

The stated application concentrations are suggested starting points. Titration of the Caspase-4 antibody may be required due to differences in protocols and secondary/substrate sensitivity.

Immunogen

Amino acids 104-124 (DALKLCPHEEFLRLCKERAEE-human) were used as the immunogen for this Caspase-4 antibody. This sequence is from the large subunit.

Storage

After reconstitution, the Caspase-4 antibody can be stored for up to one month at 4°C. For long-term, aliquot and store at -20°C. Avoid repeated freezing and thawing.