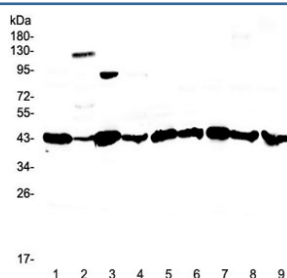


Caspase 4 Antibody / CASP4 (large subunit) (RQ4340)

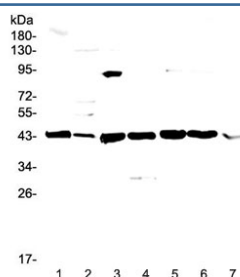
Catalog No.	Formulation	Size
RQ4340	0.5mg/ml if reconstituted with 0.2ml sterile DI water	100 ug

Bulk quote request

Availability	1-3 business days
Species Reactivity	Human, Mouse, Rat
Format	Antigen affinity purified
Clonality	Polyclonal (rabbit origin)
Isotype	Rabbit IgG
Purity	Antigen affinity purified
Buffer	Lyophilized from 1X PBS with 2% Trehalose and 0.025% sodium azide
UniProt	P70343
Localization	Cytoplasm
Applications	Western Blot : 0.5-1ug/ml Direct ELISA : 0.1-0.5ug/ml (mouse recombinant protein)
Limitations	This Caspase 4 antibody is available for research use only.



Western blot testing of rat 1) liver, 2) testis, 3) stomach, 4) thymus and human 5) COLO-320, 6) HepG2, 7) 22RV1, 8) PANC-1 and 9) SGC-7901 lysate with Caspase 4 antibody at 0.5ug/ml. Expected molecular weight ~43 kDa (precursor), ~30 kDa (pro domain + large subunit), ~20 kDa (large subunit).



Western blot testing of mouse 1) liver, 2) testis, 3) thymus, 4) lung, 5) HEPA1-6, 6) NIH3T3 and 7) SP20 lysate with Caspase 4 antibody at 0.5ug/ml. Expected molecular weight ~43 kDa (precursor), ~30 kDa (pro domain + large subunit), ~20 kDa (large subunit).

Description

Caspase 4 is an enzyme that proteolytically cleaves other proteins at an aspartic acid residue, and belongs to a family of cysteine proteases called caspases. The Caspase 4 gene is mapped to a P1 clone containing the ICE gene, which is located at chromosome 11q22.2-q22.3. It contains 8 coding exons. The function of caspase 4 is not fully known, but it is believed to be an inflammatory caspase, along with caspase 1, caspase 5 (and the murine homolog caspase 11), with a role in the immune system.

Application Notes

Optimal dilution of the Caspase 4 antibody should be determined by the researcher.

Immunogen

A recombinant mouse protein corresponding to amino acids E108-T195 was used as the immunogen for the Caspase 4 antibody.

Storage

After reconstitution, the Caspase 4 antibody can be stored for up to one month at 4°C. For long-term, aliquot and store at -20°C. Avoid repeated freezing and thawing.