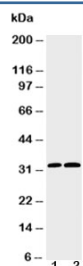


Caspase-3 Antibody (R30358)

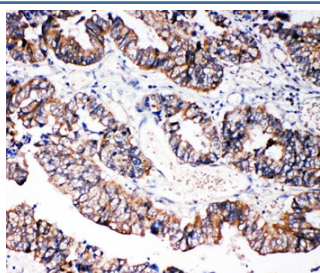
Catalog No.	Formulation	Size
R30358	0.5mg/ml if reconstituted with 0.2ml sterile DI water	100 ug

[Bulk quote request](#)

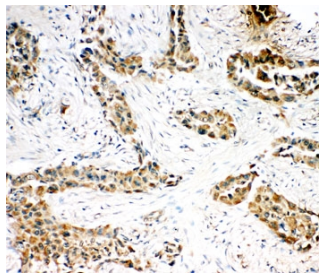
Availability	1-3 business days
Species Reactivity	Human
Format	Antigen affinity purified
Host	Rabbit
Clonality	Polyclonal (rabbit origin)
Isotype	Rabbit IgG
Purity	Antigen affinity
Buffer	Lyophilized from 1X PBS with 2.5% BSA and 0.025% sodium azide/thimerosal
UniProt	P42574
Applications	Western Blot : 0.5-1ug/ml IHC (FFPE) : 0.5-1ug/ml Immunocytochemistry : 0.5-1ug/ml
Limitations	This Caspase-3 antibody is available for research use only.



Western blot testing of Caspase-3 antibody and Lane 1: HeLa; 2: SMMC-7721 cell lysate



IHC-P: Caspase-3 antibody testing of human intestinal cancer tissue



IHC-P: Caspase-3 antibody testing of human lung cancer tissue

Description

Caspase-3, also known as YAMA, CPP32 or APOPAIN, is a member of the cysteine-aspartic acid protease family known to interact with family members -8 and -9. It is encoded by the CASP3 gene. Tiso et al.(1996) used radiation hybrid mapping to localize the gene to human chromosome 4q33-q35.1. Fernandes-Alnemri et al.(1994) found that overexpression of CASP3 in insect cells induced apoptosis. Coexpression of the two CASP3 subunits in insect cells also resulted in apoptosis. Tewari et al.(1995) showed that purified human CASP1 cleaved the CASP3 proenzyme into a proteolytically active form and that activated Caspase-3 cleaved PARP into the 85-kD apoptotic form.

Application Notes

The stated application concentrations are suggested starting points. Titration of the Caspase-3 antibody may be required due to differences in protocols and secondary/substrate sensitivity.

Immunogen

An amino acid sequence from the C-terminus of the human protein (CAMLKQYADKLEFMHIL) was used as the immunogen for this Caspase-3 antibody. This amino acid sequence is from the small subunit.

Storage

After reconstitution, the Caspase-3 antibody can be stored for up to one month at 4oC. For long-term, aliquot and store at -20oC. Avoid repeated freezing and thawing.