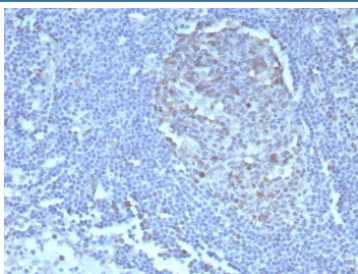


Caspase 3 Antibody / CASP3 [clone CASP3/8446] (V5548)

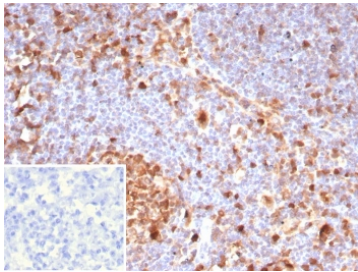
Catalog No.	Formulation	Size
V5548-100UG	0.2 mg/ml in 1X PBS with 0.1 mg/ml BSA (US sourced), 0.05% sodium azide	100 ug
V5548-20UG	0.2 mg/ml in 1X PBS with 0.1 mg/ml BSA (US sourced), 0.05% sodium azide	20 ug
V5548SAF-100UG	1 mg/ml in 1X PBS; BSA free, sodium azide free	100 ug

[Bulk quote request](#)

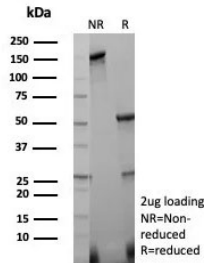
Availability	1-3 business days
Species Reactivity	Human
Format	Purified
Host	Mouse
Clonality	Monoclonal (mouse origin)
Isotype	Mouse IgG2b, kappa
Clone Name	CASP3/8446
Purity	Protein A/G affinity
UniProt	P42574
Localization	Cytoplasm
Applications	Immunohistochemistry (FFPE) : 1-2ug/ml
Limitations	This Caspase 3 antibody is available for research use only.



IHC staining of FFPE human tonsil tissue with Caspase 3 antibody (clone CASP3/8446).
 HIER: boil tissue sections in pH 9 10mM Tris with 1mM EDTA for 20 min and allow to cool before testing.



IHC staining of FFPE human lymph node tissue with Caspase 3 antibody (clone CASP3/8446). Inset: PBS used in place of primary Ab (secondary Ab negative control). HIER: boil tissue sections in pH 9 10mM Tris with 1mM EDTA for 20 min and allow to cool before testing.



SDS-PAGE analysis of purified, BSA-free Caspase 3 antibody (clone CASP3/8446) as confirmation of integrity and purity.

Description

This MAb recognizes a protein of 32kDa, identified as Caspase 3. It is an aspartate-specific cysteine protease that belongs to the ICE subfamily of caspases. Caspase-3 is expressed in cells as an inactive precursor from which the p17 and p11 subunits of the mature caspase-3 are proteolytically generated during apoptosis. The caspase-3 precursor is first cleaved at Asp 175-Ser 176 to produce the p11 subunit and the p20 peptide. Subsequently, the p20 peptide is cleaved at Asp 28-Ser 29 to generate the mature p17 subunit. The active caspase-3 enzyme is a heterodimer composed of two p17 and two p11 subunits. At the onset of apoptosis, caspase-3 proteolytically cleaves PARP at a Asp 216-Gly 217 bond. During the execution of the apoptotic cascade, activated caspase-3 releases SREBP from the membrane of the ER in a proteolytic reaction that is distinct from their normal sterol-dependent activation. Caspase-3 cleaves and activates SREBPs between the basic helix-loop-helix leucine zipper domain and the membrane attachment domain. Caspase-3 also cleaves and activates caspase-6, -7 and -9.

Application Notes

Optimal dilution of the Caspase 3 antibody should be determined by the researcher.

Immunogen

A recombinant fragment (within amino acids 1-200) of human CASP3 protein was used as the immunogen for the Caspase 3 antibody.

Storage

Aliquot the Caspase 3 antibody and store frozen at -20oC or colder. Avoid repeated freeze-thaw cycles.