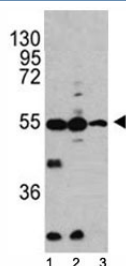


Caspase-2 Antibody (F42862)

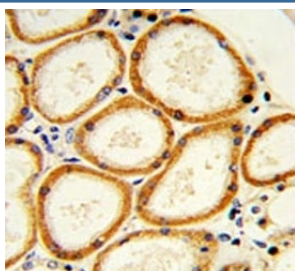
Catalog No.	Formulation	Size
F42862-0.4ML	In 1X PBS, pH 7.4, with 0.09% sodium azide	0.4 ml
F42862-0.08ML	In 1X PBS, pH 7.4, with 0.09% sodium azide	0.08 ml

Bulk quote request

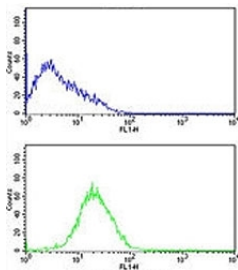
Availability	1-3 business days
Species Reactivity	Human
Format	Purified
Clonality	Polyclonal (rabbit origin)
Isotype	Rabbit Ig
Purity	Purified
UniProt	P42575
Applications	Western Blot : 1:1000 IHC (Paraffin) : 1:10-1:50 Flow Cytometry : 1:10-1:50
Limitations	This Caspase-2 antibody is available for research use only.



Western blot analysis of Caspase-2 antibody and 1) HL-60, 2) K562, 3) Ramos lysate.



IHC analysis of FFPE human lung with Caspase-2 antibody



Caspase-2 antibody flow cytometric analysis of HL-60 cells (bottom histogram) compared to a negative control cell (top histogram). FITC-conjugated goat-anti-rabbit secondary Ab was used for the analysis.

Description

CASP2 is a protein which is a member of the cysteine-aspartic acid protease (caspase) family. Sequential activation of caspases plays a central role in the execution-phase of cell apoptosis. The protein exist as inactive proenzymes which undergo proteolytic processing at conserved aspartic residues to produce two subunits, large and small, that dimerize to form the active enzyme. The proteolytic cleavage of this protein is induced by a variety of apoptotic stimuli.

Application Notes

Titration of the Caspase-2 antibody may be required due to differences in protocols and secondary/substrate sensitivity.

Immunogen

A portion of amino acids 198-226 from the human protein was used as the immunogen for this Caspase-2 antibody.

Storage

Aliquot the Caspase-2 antibody and store frozen at -20oC or colder. Avoid repeated freeze-thaw cycles.