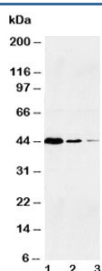


Caspase-1 Antibody (p20 subunit) (R30510)

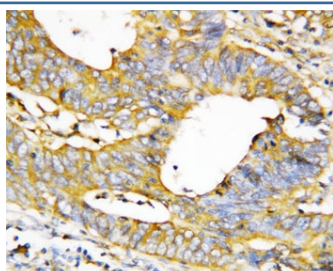
Catalog No.	Formulation	Size
R30510	0.5mg/ml if reconstituted with 0.2ml sterile DI water	100 ug

Bulk quote request

Availability	1-3 business days
Species Reactivity	Human
Format	Antigen affinity purified
Clonality	Polyclonal (rabbit origin)
Isotype	Rabbit IgG
Purity	Antigen affinity
Buffer	Lyophilized from 1X PBS with 2.5% BSA and 0.025% sodium azide/thimerosal
UniProt	P29466
Applications	Western Blot : 0.5-1ug/ml IHC (FFPE) : 0.5-1ug/ml
Limitations	This Caspase-1 antibody is available for research use only.



Western blot testing of human 1) Jurkat, 2) Raji and 3) CEM lysate with Caspase-1 antibody at 0.5ug/ml.



IHC-P testing of human breast cancer tissue

Description

Caspase-1 is a cysteine protease that regulates inflammatory processes through its capacity to process and activate the interleukin-1-beta, interleukin 18, and interleukin 33 precursor proteins. The Caspase-1 gene consists of 10 exons spanning at least 10.6 kb and is mapped to 11q23, a site frequently involved in rearrangement in human cancers, including a number of leukemias and lymphomas.

Application Notes

Titration of the Caspase-1 antibody may be required due to differences in protocols and secondary/substrate sensitivity.

Immunogen

An amino acid sequence from the N-terminus of human CASP1 (CSLEEAQRIWKQKSAEIY) was used as the immunogen for this Caspase-1 antibody. The sequence is from the large subunit.

Storage

The lyophilized Caspase-1 antibody can be stored at 4oC. After reconstitution, aliquot and store at -20oC. Repeated freeze/thaw steps should be avoided.