

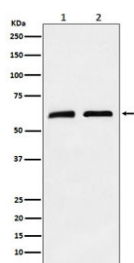
Caseinolytic protease X Antibody / CLPX [clone 28C38] (RQ8357)

Catalog No.	Formulation	Size
RQ8357	Antibody in PBS with 0.02% sodium azide, 50% glycerol and 0.4-0.5mg/ml BSA	100 ul

Recombinant **RABBIT MONOCLONAL**

[Bulk quote request](#)

Availability	1-3 business days
Species Reactivity	Human, Mouse
Format	Purified
Host	Rabbit
Clonality	Recombinant Rabbit Monoclonal
Isotype	Rabbit IgG
Clone Name	28C38
Purity	Affinity chromatography
UniProt	O76031
Applications	Western Blot : 1:500-1:2000
Limitations	This Caseinolytic protease X antibody is available for research use only.



Western blot testing of 1) human A673 and 2) mouse brain tissue lysate with Caseinolytic protease X antibody. Predicted molecular weight ~69 kDa.

Description

Caseinolytic protease X is an ATP-dependent specificity component of the Clp protease complex. [UniProt]

Application Notes

Optimal dilution of the Caseinolytic protease X antibody should be determined by the researcher.

Immunogen

A synthetic peptide derived from human Caseinolytic protease X was used as the immunogen for the Caseinolytic protease X antibody.

Storage

Store the Caseinolytic protease X antibody at -20oC.