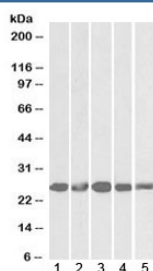


## Casein kinase 2 beta Antibody (R36427)

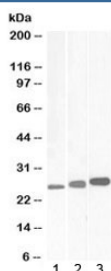
Catalog No.	Formulation	Size
R36427-100UG	0.5 mg/ml in 1X TBS, pH7.3, with 0.5% BSA (US sourced) and 0.02% sodium azide	100 ug

[Bulk quote request](#)

Availability	1-3 business days
Species Reactivity	Human, Mouse, Rat, Pig
Predicted Reactivity	Dog, Cow
Format	Antigen affinity purified
Clonality	Polyclonal (goat origin)
Isotype	Goat Ig
Purity	Antigen affinity
Gene ID	1460
Applications	Western Blot : 0.3-1ug/ml ELISA (peptide) LOD : 1:128000
Limitations	This Casein kinase 2 beta antibody is available for research use only.



Western blot testing of 1) mouse NIH3T3 and human 2) HeLa, 3) K562, 4) MCF7 and 5) HepG2 lysates with Casein kinase 2 beta antibody at 1ug/ml. Predicted molecular weight: ~25kDa.



Western blot testing of 1) mouse, 2) rat and 3) pig testis lysate with Casein kinase 2 beta antibody at 0.3ug/ml. Predicted molecular weight: ~25kDa.

## Description

Additional name(s) for this target protein: Casein kinase 2, beta polypeptide; CSNK2B

## Application Notes

Optimal dilution of the Casein kinase 2 beta antibody should be determined by the researcher.

## Immunogen

Amino acids TGLNEQVPHYRQ were used as the immunogen for this Casein kinase 2 beta antibody.

## Storage

Aliquot and store the Casein kinase 2 beta antibody at -20oC.