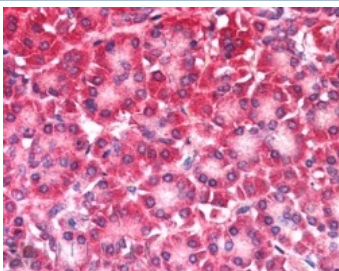


CARD6 Antibody (R33186)

Catalog No.	Formulation	Size
R33186-100UG	0.5 mg/ml in 1X TBS, pH7.3, with 0.5% BSA (US sourced) and 0.02% sodium azide	100 ug

[Bulk quote request](#)

Availability	1-3 business days
Species Reactivity	Human
Format	Antigen affinity purified
Host	Goat
Clonality	Polyclonal (goat origin)
Isotype	Goat Ig
Purity	Antigen affinity
Gene ID	84674
Applications	Immunohistochemistry (FFPE) : 5-10ug/ml ELISA (peptide) LOD : 1:32000
Limitations	This CARD6 antibody is available for research use only.



IHC testing of FFPE human pancreas with CARD6 antibody at 5ug/ml. HIER: steamed with pH6 citrate buffer, AP-staining.

Description

Additional name(s) for this target protein: Caspase recruitment domain family, member 6

Application Notes

Optimal dilution of the CARD6 antibody should be determined by the researcher.

Immunogen

Amino acids ATESTPSEIIERER were used as the immunogen for this CARD6 antibody.

Storage

Aliquot and store the CARD6 antibody at -20oC.