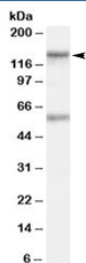


CARD11 Antibody (R35433)

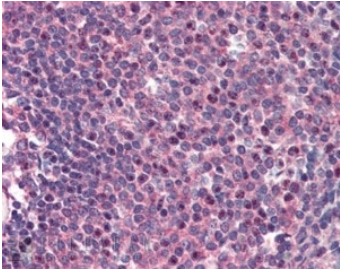
Catalog No.	Formulation	Size
R35433-100UG	0.5 mg/ml in 1X TBS, pH7.3, with 0.5% BSA (US sourced) and 0.02% sodium azide	100 ug

[Bulk quote request](#)

Availability	1-3 business days
Species Reactivity	Human
Predicted Reactivity	Mouse, Dog, Cow
Format	Antigen affinity purified
Host	Goat
Clonality	Polyclonal (goat origin)
Isotype	Goat Ig
Purity	Antigen affinity
Gene ID	84433
Applications	Western Blot : 1-3ug/ml Immunohistochemistry (FFPE) : 2-5ug/ml ELISA (peptide) LOD : 1:32000
Limitations	This CARD11 antibody is available for research use only.



Western blot testing of human Jurkat lysate and CARD11 antibody at 1ug/ml. The expected ~133 kDa band and additional ~60 kDa band are both blocked by the immunizing peptide.



IHC staining of FFPE human spleen with CARD11 antibody at 2ug/ml. HIER: steamed with pH6 citrate buffer, AP-staining.

Description

Additional name(s) for this target protein: Caspase recruitment domain family member 11, BIMP3, CARMA1

Application Notes

Optimal dilution of the CARD11 antibody should be determined by the researcher.

Immunogen

Amino acids QRKTIWVDEDQL were used as the immunogen for this CARD11 antibody.

Storage

Aliquot and store the CARD11 antibody at -20oC.