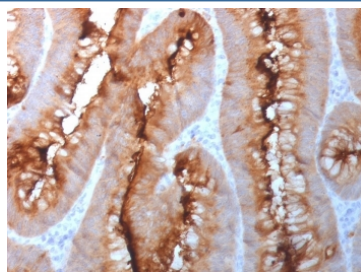


Carcinoembryonic Antigen Antibody / CEA (V4046)

| Catalog No. | Formulation | Size |
|----------------|---|--------|
| V4046-100UG | 0.2 mg/ml in 1X PBS with 0.1 mg/ml BSA (US sourced), 0.05% sodium azide | 100 ug |
| V4046-20UG | 0.2 mg/ml in 1X PBS with 0.1 mg/ml BSA (US sourced), 0.05% sodium azide | 20 ug |
| V4046SAF-100UG | 1 mg/ml in 1X PBS; BSA free, sodium azide free | 100 ug |

Bulk quote request

| | |
|---------------------------|--|
| Availability | 1-3 business days |
| Species Reactivity | Human |
| Format | Purified |
| Clonality | Polyclonal (rabbit origin) |
| Isotype | Rabbit IgG |
| Purity | Protein A/G affinity |
| UniProt | P06731 |
| Localization | Cytoplasm |
| Applications | Immunohistochemistry (FFPE) : 1-2ug/ml |
| Limitations | This Carcinoembryonic Antigen antibody is available for research use only. |



IHC staining of FFPE human colon carcinoma tissue with CEA antibody. HIER: boil tissue sections in pH 9 10mM Tris with 1mM EDTA for 20 min and allow to cool before testing.

Description

This antibody recognizes proteins of 80-200kDa, identified as different members of CEA family. CEA is synthesized during development in the fetal gut and is re-expressed in increased amounts in intestinal carcinomas and several other tumors. This MAb does not react with nonspecific cross-reacting antigen (NCA) and with human polymorphonuclear leucocytes. It shows no reaction with a variety of normal tissues and is suitable for staining of formalin/paraffin tissues. CEA is not found in benign glands, stroma, or malignant prostatic cells. Antibody to CEA is useful in detecting early foci of

gastric carcinoma and in distinguishing pulmonary adenocarcinomas (60-70% are CEA+) from pleural mesotheliomas (rarely or weakly CEA+). Anti-CEA positivity is seen in adenocarcinomas from the lung, colon, stomach, esophagus, pancreas, gallbladder, urachus, salivary gland, ovary, and endocervix.

Application Notes

Optimal dilution of the Carcinoembryonic Antigen antibody should be determined by the researcher.

Immunogen

Human CEA protein was used as the immunogen for the CEA antibody.

Storage

Aliquot the Carcinoembryonic Antigen antibody and store frozen at -20oC or colder. Avoid repeated freeze-thaw cycles.