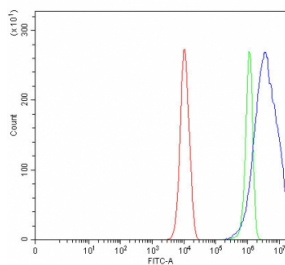


## Carcinoembryonic Antigen Antibody / CEA (RQ8017)

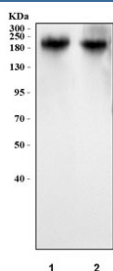
Catalog No.	Formulation	Size
RQ8017	0.5mg/ml if reconstituted with 0.2ml sterile DI water	100 ug

**Bulk quote request**

<b>Availability</b>	1-3 business days
<b>Species Reactivity</b>	Human
<b>Format</b>	Antigen affinity purified
<b>Host</b>	Rabbit
<b>Clonality</b>	Polyclonal (rabbit origin)
<b>Isotype</b>	Rabbit IgG
<b>Purity</b>	Antigen affinity purified
<b>Buffer</b>	Lyophilized from 1X PBS with 2% Trehalose
<b>UniProt</b>	P06731
<b>Applications</b>	Western Blot : 0.5-1ug/ml Flow Cytometry : 1-3ug/million cells Direct ELISA : 0.1-0.5ug/ml
<b>Limitations</b>	This Carcinoembryonic Antigen antibody is available for research use only.



Flow cytometry testing of fixed and permeabilized human PC-3 cells with Carcinoembryonic Antigen antibody at 1ug/million cells (blocked with goat sera); Red=cells alone, Green=isotype control, Blue= Carcinoembryonic Antigen antibody.



Western blot testing of human 1) MCF7 and 2) HaCaT cell lysate with Carcinoembryonic Antigen antibody. Expected molecular weight: 80~200 kDa depending on glycosylation level.

## Description

CEA (Carcinoembryonic antigen) is a glycoprotein involved in cell adhesion. It is normally produced during fetal development, but the production of CEA stops before birth. Therefore, it is not usually present in the blood of healthy adults, although levels are raised in heavy smokers. CEA is a glycosyl phosphatidyl inositol(GPI)-cell surface anchored glycoprotein whose specialized sialofucosylated glycoforms serve as functional colon carcinoma L-selectin and E-selectin ligands, which may be critical to the metastatic dissemination of colon carcinoma cells. CEA and related genes make up the CEA family belonging to the immunoglobulin superfamily. In humans, the carcinoembryonic antigen family consists of 29 genes, 18 of which are normally expressed.

## Application Notes

Optimal dilution of the Carcinoembryonic Antigen antibody should be determined by the researcher.

## Immunogen

E. coli-derived recombinant human protein (amino acids N553-G678) was used as the immunogen for the Carcinoembryonic Antigen antibody.

## Storage

After reconstitution, the Carcinoembryonic Antigen antibody can be stored for up to one month at 4oC. For long-term, aliquot and store at -20oC. Avoid repeated freezing and thawing.