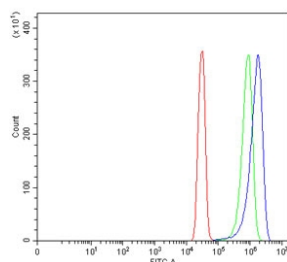


Carboxypeptidase O Antibody / CPO (RQ6853)

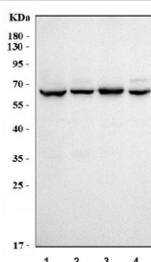
Catalog No.	Formulation	Size
RQ6853	0.5mg/ml if reconstituted with 0.2ml sterile DI water	100 ug

Bulk quote request

Availability	1-3 business days
Species Reactivity	Human
Format	Antigen affinity purified
Clonality	Polyclonal (rabbit origin)
Isotype	Rabbit IgG
Purity	Antigen affinity purified
Buffer	Lyophilized from 1X PBS with 2% Trehalose
UniProt	Q8IVL8
Applications	Western Blot : 1-2ug/ml Flow Cytometry : 1-3ug/million cells Direct ELISA : 0.1-0.5ug/ml
Limitations	This Carboxypeptidase O antibody is available for research use only.



Flow cytometry testing of human SiHa cells with Carboxypeptidase O antibody at 1ug/million cells (blocked with goat sera); Red=cells alone, Green=isotype control, Blue=Carboxypeptidase O antibody.



Western blot testing of human 1) Caco-2, 2) COLO-320, 3) SW620 and 4) AGS cell lysate with Carboxypeptidase O antibody. Predicted molecular weight ~42 kDa but may be observed at higher molecular weights due to glycosylation.

Description

This gene is a member of the metallocarboxypeptidase gene family.

Application Notes

Optimal dilution of the Carboxypeptidase O antibody should be determined by the researcher.

Immunogen

Recombinant human protein (amino acids D34-V280) was used as the immunogen for the Carboxypeptidase O antibody.

Storage

After reconstitution, the Carboxypeptidase O antibody can be stored for up to one month at 4°C. For long-term, aliquot and store at -20°C. Avoid repeated freezing and thawing.