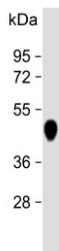


Carboxypeptidase B Antibody / CPB1 (F54360)

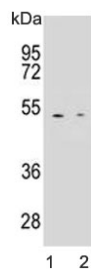
Catalog No.	Formulation	Size
F54360-0.4ML	In 1X PBS, pH 7.4, with 0.09% sodium azide	0.4 ml
F54360-0.08ML	In 1X PBS, pH 7.4, with 0.09% sodium azide	0.08 ml

[Bulk quote request](#)

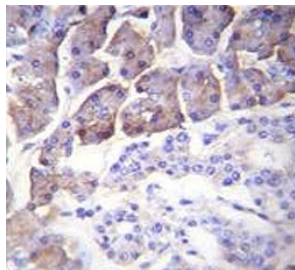
Availability	1-3 business days
Species Reactivity	Human
Format	Purified
Host	Rabbit
Clonality	Polyclonal (rabbit origin)
Isotype	Rabbit Ig
Purity	Antigen affinity purified
UniProt	P15086
Applications	Flow Cytometry : 1:25 (1x10e6 cells) Western Blot : 1:500-1:2000 Immunohistochemistry (FFPE) : 1:25 Immunofluorescence : 1:25
Limitations	This Carboxypeptidase B antibody is available for research use only.



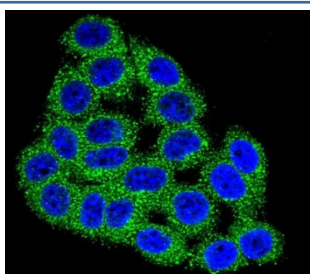
Western blot testing of human pancreas lysate with Carboxypeptidase B antibody.
Predicted molecular weight ~45 kDa.



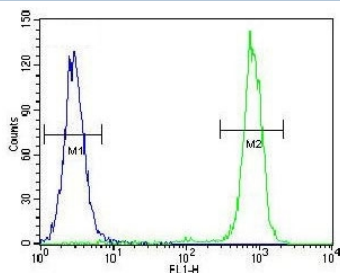
Western blot testing of human 1) K562 and 2) HeLa cell lysate with Carboxypeptidase B antibody. Predicted molecular weight ~45 kDa.



IHC testing of FFPE human pancreas tissue with Carboxypeptidase B antibody. HIER: steam section in pH6 citrate buffer for 20 min and allow to cool prior to staining.



Immunofluorescent staining of fixed and permeabilized human HeLa cells with Carboxypeptidase B antibody (green) and DAPI nuclear stain (blue).



Flow cytometry testing of fixed and permeabilized human HeLa cells with Carboxypeptidase B antibody; Blue=isotype control, Green= Carboxypeptidase B antibody.

Description

Three different procarboxypeptidases A and two different procarboxypeptidases B have been isolated. The B1 and B2 forms differ from each other mainly in isoelectric point. Carboxypeptidase B1 is a highly tissue-specific protein and is a useful serum marker for acute pancreatitis and dysfunction of pancreatic transplants. It is not elevated in pancreatic carcinoma.

Application Notes

The stated application concentrations are suggested starting points. Titration of the Carboxypeptidase B antibody may be required due to differences in protocols and secondary/substrate sensitivity.

Immunogen

A portion of amino acids 9-37 from the human CBP1 protein was used as the immunogen for the Carboxypeptidase B antibody.

Storage

Aliquot the Carboxypeptidase B antibody and store frozen at -20°C or colder. Avoid repeated freeze-thaw cycles.

