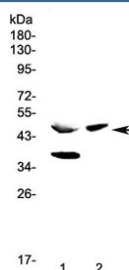


Carboxypeptidase A Antibody (RQ4145)

Catalog No.	Formulation	Size
RQ4145	0.5mg/ml if reconstituted with 0.2ml sterile DI water	100 ug

Bulk quote request

Availability	1-3 business days
Species Reactivity	Mouse, Rat
Predicted Reactivity	Human
Format	Antigen affinity purified
Clonality	Polyclonal (rabbit origin)
Isotype	Rabbit IgG
Purity	Antigen affinity purified
Buffer	Lyophilized from 1X PBS with 2% Trehalose and 0.025% sodium azide
UniProt	P15085
Applications	Western Blot : 0.5-1ug/ml
Limitations	This Carboxypeptidase A antibody is available for research use only.



Western blot testing of 1) rat pancreas and 2) mouse pancreas lysate with Carboxypeptidase A antibody at 0.5ug/ml. Predicted molecular weight ~47 kDa.

Description

Carboxypeptidase A1 is an enzyme that in humans is encoded by the CPA1 gene. This gene encodes a member of the carboxypeptidase A family of zinc metalloproteases. This enzyme is produced in the pancreas and preferentially cleaves C-terminal branched-chain and aromatic amino acids from dietary proteins. This gene and several family members are present in a gene cluster on chromosome 7. Mutations in this gene may be linked to chronic pancreatitis, while elevated protein levels may be associated with pancreatic cancer.

Application Notes

Optimal dilution of the Carboxypeptidase A antibody should be determined by the researcher.

Immunogen

Amino acids KRPAIWIDTGIHSREWVTQASGVWFAKKITQDYGGQDAFTAILEDTLTLD from the human protein were used as the immunogen for the Carboxypeptidase A antibody.

Storage

After reconstitution, the Carboxypeptidase A antibody can be stored for up to one month at 4°C. For long-term, aliquot and store at -20°C. Avoid repeated freezing and thawing.