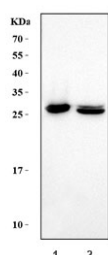


## Carbonic Anhydrase I Antibody (R30495)

Catalog No.	Formulation	Size
R30495	0.5mg/ml if reconstituted with 0.2ml sterile DI water	100 ug

**Bulk quote request**

<b>Availability</b>	1-3 business days
<b>Species Reactivity</b>	Human, Rat
<b>Format</b>	Antigen affinity purified
<b>Clonality</b>	Polyclonal (rabbit origin)
<b>Isotype</b>	Rabbit IgG
<b>Purity</b>	Antigen affinity
<b>Buffer</b>	Lyophilized from 1X PBS with 2.5% BSA and 0.025% sodium azide/thimerosal
<b>UniProt</b>	P00915
<b>Applications</b>	Western Blot : 0.5-1ug/ml
<b>Limitations</b>	This Carbonic Anhydrase I antibody is available for research use only.



Western blot testing of 1) human HEL and 2) rat spleen tissue lysate with Carbonic Anhydrase I antibody. Predicted molecular weight ~29 kDa.

## Description

Carbonic anhydrase I is an enzyme that in humans is encoded by the CA1 gene, mapped to 8q22. This protein is highly expressed in erythrocytes. As a catalyst of the reversible hydration of carbon dioxide, the protein participate in a variety of biologic processes such as respiration, calcification, and acid-base balance.

## Application Notes

The stated application concentrations are suggested starting amounts. Titration of the Carbonic Anhydrase I antibody may be required due to differences in protocols and secondary/substrate sensitivity.

## Immunogen

Amino acids SYNPAKEIINVGHSEH were used as the immunogen for this Carbonic Anhydrase I antibody.

## Storage

After reconstitution, the Carbonic Anhydrase I antibody can be stored for up to one month at 4°C. For long-term, aliquot and store at -20°C. Avoid repeated freezing and thawing.