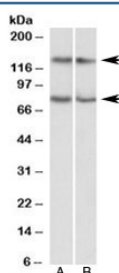


CAPRIN1 Antibody / GPIP137 (R33945)

Catalog No.	Formulation	Size
R33945-100UG	0.5 mg/ml in 1X TBS, pH7.3, with 0.5% BSA (US sourced) and 0.02% sodium azide	100 ug

[Bulk quote request](#)

Availability	1-3 business days
Species Reactivity	Human
Predicted Reactivity	Rat, Dog, Pig
Format	Antigen affinity purified
Clonality	Polyclonal (goat origin)
Isotype	Goat Ig
Purity	Antigen affinity
Gene ID	4076
Applications	Western Blot : 0.3-1ug/ml ELISA (peptide) LOD : 1:16000
Limitations	This CAPRIN1 antibody is available for research use only.



Western blot testing of Jurkat [A] and HeLa [B] lysates with CAPRIN1 antibody at 0.3ug/ml. Predicted molecular weight: ~78kDa but often observed at ~116kDa (phosphorylated CAPRIN1) as well as ~137kDa (GPIP137).

Description

Additional name(s) for this target protein: Cell cycle associated protein 1; GPI-anchored protein p137

Application Notes

Optimal dilution of the CAPRIN1 antibody should be determined by the researcher.

Immunogen

Amino acids EQRPQKEPIDQ were used as the immunogen for this CAPRIN1 antibody.

Storage

Aliquot and store the CAPRIN1 antibody at -20oC.