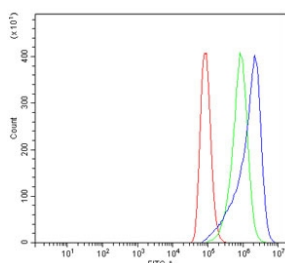


## CAPN1 Antibody / Calpain 1 [clone 2E3.] (RQ6539)

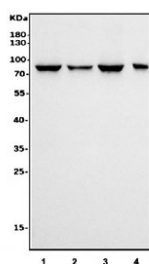
Catalog No.	Formulation	Size
RQ6539	0.5mg/ml if reconstituted with 0.2ml sterile DI water	100 ug

**Bulk quote request**

<b>Availability</b>	1-3 business days
<b>Species Reactivity</b>	Human
<b>Format</b>	Antigen affinity purified
<b>Clonality</b>	Monoclonal (mouse origin)
<b>Isotype</b>	Mouse IgG2b
<b>Clone Name</b>	2E3.
<b>Purity</b>	Affinity purified
<b>Buffer</b>	Lyophilized from 1X PBS with 2% Trehalose
<b>UniProt</b>	P07384
<b>Applications</b>	Western Blot : 1-2ug/ml Flow Cytometry : 1-3ug/million cells
<b>Limitations</b>	This CAPN1 antibody is available for research use only.



Flow cytometry testing of human A549 cells with CAPN1 antibody at 1ug/million cells (blocked with goat sera); Red=cells alone, Green=isotype control, Blue= CAPN1 antibody.



Western blot testing of human 1) Jurkat, 2) HeLa, 3) K562 and 4) PC-3 cell lysate with CAPN1 antibody. Predicted molecular weight: ~82 kDa.

## Description

CAPN1 is also known as CANP or muCL. The calpains, calcium-activated neutral proteases, are nonlysosomal, intracellular cysteine proteases. The mammalian calpains include ubiquitous, stomach-specific, and muscle-specific proteins. The ubiquitous enzymes consist of heterodimers with distinct large, catalytic subunits associated with a common small, regulatory subunit. This gene encodes the large subunit of the ubiquitous enzyme, calpain 1. Several transcript variants encoding two different isoforms have been found for this gene.

## Application Notes

Optimal dilution of the CAPN1 antibody should be determined by the researcher.

## Immunogen

An E. coli-derived human protein (amino acids Q396-A555) was used as the immunogen for the CAPN1 antibody.

## Storage

After reconstitution, the CAPN1 antibody can be stored for up to one month at 4°C. For long-term, aliquot and store at -20°C. Avoid repeated freezing and thawing.