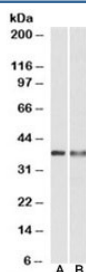


## CAPG Antibody (R34825)

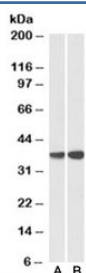
Catalog No.	Formulation	Size
R34825-100UG	0.5 mg/ml in 1X TBS, pH7.3, with 0.5% BSA (US sourced) and 0.02% sodium azide	100 ug

[Bulk quote request](#)

Availability	1-3 business days
Species Reactivity	Human
Predicted Reactivity	Dog
Format	Antigen affinity purified
Host	Goat
Clonality	Polyclonal (goat origin)
Isotype	Goat Ig
Purity	Antigen affinity
Gene ID	822
Applications	Western Blot : 0.3-1ug/ml ELISA (peptide) LOD : 1:64000
Limitations	This CAPG antibody is available for research use only.



Western blot testing of U937 [A] and human spleen [B] lysates with CAPG antibody at 0.3ug/ml. Predicted molecular weight: ~38kDa.



Western blot testing of peripheral blood lymphocyte lysate with CAPG antibody at 0.3ug/ml (Lane A: cat # R34825 and Lane B: [cat # 34356](#)). Predicted molecular weight: ~38kDa.

## Description

Additional name(s) for this target protein: Capping protein (actin filament), gelsolin-like, Macrophage capping protein, MCP; CAPG

## Application Notes

Optimal dilution of the CAPG antibody should be determined by the researcher.

## Immunogen

Amino acids NIRATERALNWDS were used as the immunogen for this CAPG antibody.

## Storage

Aliquot and store the CAPG antibody at -20oC.