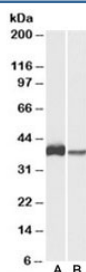


## CAPG Antibody (R34356)

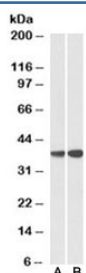
Catalog No.	Formulation	Size
R34356-100UG	0.5 mg/ml in 1X TBS, pH7.3, with 0.5% BSA (US sourced) and 0.02% sodium azide	100 ug

[Bulk quote request](#)

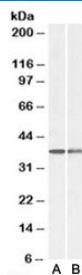
Availability	1-3 business days
Species Reactivity	Human, Mouse, Rat, Pig
Predicted Reactivity	Dog
Format	Antigen affinity purified
Host	Goat
Clonality	Polyclonal (goat origin)
Isotype	Goat Ig
Purity	Antigen affinity
Gene ID	822
Applications	Western Blot : 0.3-1ug/ml ELISA (peptide) LOD : 1:128000
Limitations	This CAPG antibody is available for research use only.



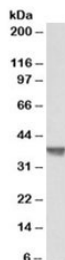
Western blot testing of U937 [A] and human spleen [B] lysates with CAPG antibody at 0.3ug/ml. Predicted molecular weight: ~38kDa.



Western blot testing of peripheral blood lymphocyte lysate with CAPG antibody at 0.3ug/ml (Lane A: cat # [R34825](#) and Lane B: cat # 34356). Predicted molecular weight: ~38kDa.



Western blot of mouse (A) and rat spleen (B) lysates with CAPG antibody at 0.1ug/ml.  
Predicted molecular weight: ~38kDa.



Western blot of pig spleen lysate with CAPG antibody at 0.3ug/ml.. Predicted molecular weight: ~38kDa.

## Description

Additional name(s) for this target protein: Capping protein, gelsolin-like

## Application Notes

Optimal dilution of the CAPG antibody should be determined by the researcher.

1. This CAPG antibody is specific for isoform 1.

## Immunogen

Amino acids KQVEIVTDGEEP were used as the immunogen for this CAPG antibody.

## Storage

Aliquot and store the CAPG antibody at -20oC.