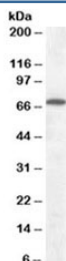


## Cannabinoid Receptor Antibody (R34308)

Catalog No.	Formulation	Size
R34308-100UG	0.5 mg/ml in 1X TBS, pH7.3, with 0.5% BSA (US sourced) and 0.02% sodium azide	100 ug

[Bulk quote request](#)

Availability	1-3 business days
Species Reactivity	Human, Mouse
Predicted Reactivity	Dog, Rat
Format	Antigen affinity purified
Host	Goat
Clonality	Polyclonal (goat origin)
Isotype	Goat Ig
Purity	Antigen affinity
Gene ID	1268
Applications	Western Blot : 0.1-0.3ug/ml ELISA (peptide) LOD : 1:32000
Limitations	This Cannabinoid Receptor antibody is available for research use only.



Western blot testing of rat brain lysate with Cannabinoid Receptor antibody at 0.1ug/ml.  
Predicted molecular weight ~53 kDa, can also be observed at ~70kDa.

### Description

Additional name(s) for this target protein: CANN6, CB-R, CB1, CB1A, CB1K5, CNR, CB1R; CNR1

### Application Notes

Optimal dilution of the Cannabinoid Receptor antibody should be determined by the researcher.

## **Immunogen**

Amino acids HTSEDGKVQVTRPDQ were used as the immunogen for this Cannabinoid Receptor antibody.

## **Storage**

Aliquot and store the Cannabinoid Receptor antibody at -20oC.