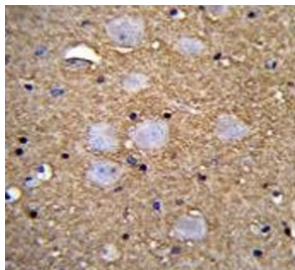


## CAMSAP1 Antibody (F54587)

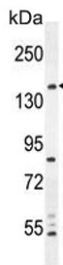
Catalog No.	Formulation	Size
F54587-0.4ML	In 1X PBS, pH 7.4, with 0.09% sodium azide	0.4 ml
F54587-0.08ML	In 1X PBS, pH 7.4, with 0.09% sodium azide	0.08 ml

[Bulk quote request](#)

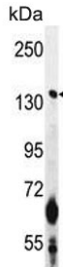
<b>Availability</b>	1-3 business days
<b>Species Reactivity</b>	Human, Mouse
<b>Format</b>	Purified
<b>Host</b>	Rabbit
<b>Clonality</b>	Polyclonal (rabbit origin)
<b>Isotype</b>	Rabbit Ig
<b>Purity</b>	Antigen affinity purified
<b>UniProt</b>	Q5T5Y3
<b>Localization</b>	Cytoplasmic
<b>Applications</b>	Flow Cytometry : 1:25 (1x10e6 cells) Immunohistochemistry (FFPE) : 1:25 Western Blot : 1:500-1:2000
<b>Limitations</b>	This CAMSAP1 antibody is available for research use only.



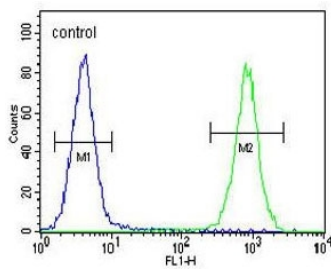
IHC testing of FFPE human brain tissue with CAMSAP1 antibody. HIER: steam section in pH6 citrate buffer for 20 min and allow to cool prior to staining.



Western blot testing of human MDA-MB-435 cell lysate with CAMSAP1 antibody.  
Predicted molecular weight ~178 kDa.



Western blot testing of mouse Neuro-2a cell lysate with CAMSAP1 antibody. Predicted molecular weight ~178 kDa.



Flow cytometry testing of human MDA-MB-453 cells with CAMSAP1 antibody;  
Blue=isotype control, Green= CAMSAP1 antibody.

## Description

Key microtubule-organizing protein that specifically binds the minus-end of non-centrosomal microtubules and regulates their dynamics and organization [UniProt].

## Application Notes

The stated application concentrations are suggested starting points. Titration of the CAMSAP1 antibody may be required due to differences in protocols and secondary/substrate sensitivity.

## Immunogen

A portion of amino acids 34-62 from the human protein was used as the immunogen for the CAMSAP1 antibody.

## Storage

Aliquot the CAMSAP1 antibody and store frozen at -20°C or colder. Avoid repeated freeze-thaw cycles.