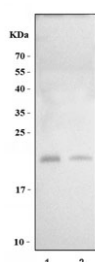


Camp Antibody (RQ6830)

Catalog No.	Formulation	Size
RQ6830	0.5mg/ml if reconstituted with 0.2ml sterile DI water	100 ug

Bulk quote request

Availability	1-3 business days
Species Reactivity	Mouse, Rat
Format	Antigen affinity purified
Clonality	Polyclonal (rabbit origin)
Isotype	Rabbit IgG
Purity	Antigen affinity purified
Buffer	Lyophilized from 1X PBS with 2% Trehalose
UniProt	G3V8S9
Applications	Western Blot : 1-2ug/ml
Limitations	This Camp antibody is available for research use only.



Western blot testing of 1) rat testis and 2) mouse testis tissue lysate with Camp antibody. Predicted molecular weight ~20 kDa.

Description

This gene encodes a member of an antimicrobial peptide family, characterized by a highly conserved N-terminal signal peptide containing a cathelin domain and a structurally variable cationic antimicrobial peptide, which is produced by extracellular proteolysis from the C-terminus. The protein plays an important role in innate immunity defense against viruses. In addition to its antibacterial, antifungal, and antiviral activities, the encoded protein functions in cell chemotaxis, immune mediator induction, and inflammatory response regulation.

Application Notes

Optimal dilution of the Camp antibody should be determined by the researcher.

Immunogen

Amino acids LLRKGGEKFGEKLRKIGQKIKDFFQKLAPEIEQ from the rat protein were used as the immunogen for the Camp antibody.

Storage

After reconstitution, the Camp antibody can be stored for up to one month at 4oC. For long-term, aliquot and store at -20oC. Avoid repeated freezing and thawing.