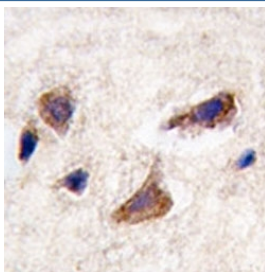


## CAMKK2 Antibody (F50127)

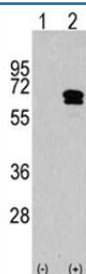
| Catalog No.   | Formulation                                | Size    |
|---------------|--|---------|
| F50127-0.4ML  | In 1X PBS, pH 7.4, with 0.09% sodium azide | 0.4 ml  |
| F50127-0.08ML | In 1X PBS, pH 7.4, with 0.09% sodium azide | 0.08 ml |

[Bulk quote request](#)

|                             |  |
|-----------------------------|--|
| <b>Availability</b>         | 1-3 business days  |
| <b>Species Reactivity</b>   | Human  |
| <b>Predicted Reactivity</b> | Mouse, Rat   |
| <b>Format</b>               | Purified   |
| <b>Host</b>                 | Rabbit   |
| <b>Clonality</b>            | Polyclonal (rabbit origin)                               |
| <b>Isotype</b>              | Rabbit Ig  |
| <b>Purity</b>               | Purified   |
| <b>UniProt</b>              | Q96RR4   |
| <b>Applications</b>         | Western Blot : 1:1000<br>IHC (Paraffin) : 1:50           |
| <b>Limitations</b>          | This CAMKK2 antibody is available for research use only. |



IHC analysis of FFPE human brain tissue stained with CAMKK2 antibody



Western blot analysis of CAMKK2 antibody and 293 cell lysate either nontransfected (Lane 1) or transiently transfected with the CAMKK2 gene (2). Predicted molecular weight 60-65 kDa.

## Description

CAMKK2 belongs to the Serine/Threonine protein kinase family, and to the Ca(2+)/calmodulin-dependent protein kinase subfamily. This protein plays a role in the calcium/calmodulin-dependent (CaM) kinase cascade by phosphorylating the downstream kinases CaMK1 and CaMK4. Isoform 1, isoform 2 and isoform 3 phosphorylate CAMK1 and CAMK4. Isoform 3 phosphorylates CAMK1D. Isoform 4, isoform 5 and isoform 6 lacking part of the calmodulin-binding domain are inactive. CAMKK2 appears to be involved in hippocampal activation of CREB1.

## Application Notes

Titration of the CAMKK2 antibody may be required due to differences in protocols and secondary/substrate sensitivity.

## Immunogen

A portion of amino acids 483-512 from the human protein was used as the immunogen for this CAMKK2 antibody.

## Storage

Aliquot the CAMKK2 antibody and store frozen at -20oC or colder. Avoid repeated freeze-thaw cycles.